

## Product datasheet for **TP301663M**

### CEP72 (NM\_018140) Human Recombinant Protein

#### Product data:

|                                       |  |
|---------------------------------------|--|
| Product Type:                         | Recombinant Proteins   |
| Description:                          | Recombinant protein of human centrosomal protein 72kDa (CEP72), 100 µg       |
| Species:                              | Human  |
| Expression Host:                      | HEK293T  |
| Expression cDNA Clone or AA Sequence: | >RC201663 protein sequence<br><b>Red</b> =Cloning site <b>Green</b> =Tags(s) |

MARAGPRLVLSEEAVRAKSGLGPHRDLAELQSL SIPGT YQE KITHLGHSLMSLTGLKSLDLSRNSLVSLE  
GIQYLTALESNLNLYNCISSLAIEVFRHLHALTELVDVDFRLNPVWKVEPDYRLFVHLLPKLQQLDDR  
ASERKASRLHFASEDSLDSKESVPASLKEGRPHHPRAKCTEALAKQSLVMDADDEAVLNLIAECEWDLGR  
PPGSTSFSQKGREADSRGSQESRHLLSPQLVQYQCGDSGKQGRETRRSSRCGCCLEKMPWSQLCGELPPL  
YGAEPASRAPRPHTYFTPHPDSDMTEDSASSQKLDLSGEMVPGPLPAPGKCRKRRMPVGRFQTFSDQEG  
LGCPERTHGSSVPKESLSRQDSSES RNGRTL SQPEASETEEQSRGVTDTREPSPGSHSALPGKKTALQA  
ALLETLLDLVDRSWGGRSLHSNEAFLAQRHILSSVEEFTAAQDSSAMVGEDVGLSALESKSLQSR  
LAEQQQHAREMSEVTAELHHTHKELDDLRLQHLDKSLEENSRLKSLLLSMKKEVKSADTAATLNLQIAGLQTS  
VKRLCGEIVELKQHLEHYDKIQELTQMLQESHSSLVSTNEHLLQELSQVRAQHRAEVEQMHWSYQELKKT  
MALFPSSASHGGCQAC

**TRTRPLEQKLISEEDLAANDILDYKDDDDKV**

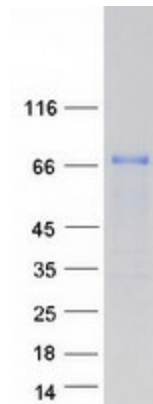
|                |  |
|----------------|--|
| Tag:           | C-Myc/DDK  |
| Predicted MW:  | 71.5 kDa   |
| Concentration: | >0.05 µg/µL as determined by microplate BCA method   |
| Purity:        | > 80% as determined by SDS-PAGE and Coomassie blue staining  |
| Buffer:        | 25 mM Tris-HCl, 100 mM glycine, pH 7.3, 10% glycerol   |
| Preparation:   | Recombinant protein was captured through anti-DDK affinity column followed by conventional chromatography steps.                                     |
| Note:          | For testing in cell culture applications, please filter before use. Note that you may experience some loss of protein during the filtration process. |
| Storage:       | Store at -80°C.  |



[View online »](#)

|                      |  |
|----------------------|--|
| <b>Stability:</b>    | Stable for 12 months from the date of receipt of the product under proper storage and handling conditions. Avoid repeated freeze-thaw cycles.  |
| <b>RefSeq:</b>       | <a href="#">NP_060610</a>  |
| <b>Locus ID:</b>     | 55722  |
| <b>UniProt ID:</b>   | <a href="#">Q9P209</a>   |
| <b>RefSeq Size:</b>  | 2427   |
| <b>Cytogenetics:</b> | 5p15.33  |
| <b>RefSeq ORF:</b>   | 1941   |
| <b>Summary:</b>      | The product of this gene is a member of the leucine-rich-repeat (LRR) superfamily of proteins. The protein is localized to the centrosome, a non-membraneous organelle that functions as the major microtubule-organizing center in animal cells. [provided by RefSeq, Jul 2008] |

### Product images:



Coomassie blue staining of purified CEP72 protein (Cat# [TP301663]). The protein was produced from HEK293T cells transfected with CEP72 cDNA clone (Cat# [RC201663]) using MegaTran 2.0 (Cat# [TT210002]).