

## Product datasheet for **TP301663L**

### CEP72 (NM\_018140) Human Recombinant Protein

#### Product data:

Product Type:	Recombinant Proteins
Description:	Recombinant protein of human centrosomal protein 72kDa (CEP72), 1 mg
Species:	Human
Expression Host:	HEK293T
Expression cDNA Clone or AA Sequence:	>RC201663 protein sequence <b>Red</b> =Cloning site <b>Green</b> =Tags(s)

MARAGPRLVLSEEAVRAKSGLGPHRDLAELQSL SIPGT YQE KITHLGHSLMSLTGLKSLDLSRNSLVSLE  
GIQYLTALESNLNLYNCISSLAEVFRLHALTELVDVDFRLNPVWKVEPDYRLFVHLLPKLQQLDDRVPV  
ASERKASRLHFASEDSLDSKESVPASLKEGRPHHPRAKCTEALAKQSLVMDADDEAVLNLIAECEWDLGR  
PPGSTSFSQKGREADSRGSQESRHLLSPQLVQYQCGDSGKQGRETRRSSCRGCCLEKMPWSQLCGELPPL  
YGAEPASRAPRPHTYFTPHPDSDMTEDSASSQKLDLSGEMVPGPLPAPGKCRKRRMPVGRFQTFSDQEG  
LGCPERTHGSSVPKESLSRQDSSES RNGRTL SQPEASETEEQSRGVTDTREPSPGSHSALPGKKTALQA  
ALLETLLDLVDRSWGGRSLHSNEAFLAQRHILSSVEEFTAAQDSSAMVGEDVGLSALESKSLQSR LAE  
QQQHQHAREMSEVTAELHHTHKELDDL RQHLDKSLEENSRLKSLLLSMKKEVKSADTAATLNLQIAGLQTS  
VKRLCGEIVELKQHLEHYDKIQELTQMLQESHSSLVSTNEHLLQELSQVRAQHRAEVEQMHWSYQELKKT  
MALFPHSSASHGGCQAC

**TRTRPLEQKLISEEDLAANDILDYKDDDDKV**

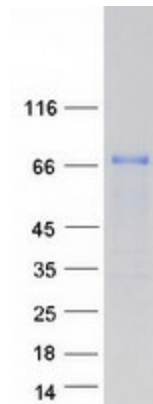
Tag:	C-Myc/DDK
Predicted MW:	71.5 kDa
Concentration:	>0.05 µg/µL as determined by microplate BCA method
Purity:	> 80% as determined by SDS-PAGE and Coomassie blue staining
Buffer:	25 mM Tris-HCl, 100 mM glycine, pH 7.3, 10% glycerol
Preparation:	Recombinant protein was captured through anti-DDK affinity column followed by conventional chromatography steps.
Note:	For testing in cell culture applications, please filter before use. Note that you may experience some loss of protein during the filtration process.
Storage:	Store at -80°C.



[View online »](#)

<b>Stability:</b>	Stable for 12 months from the date of receipt of the product under proper storage and handling conditions. Avoid repeated freeze-thaw cycles.
<b>RefSeq:</b>	<a href="#">NP_060610</a>
<b>Locus ID:</b>	55722
<b>UniProt ID:</b>	<a href="#">Q9P209</a>
<b>RefSeq Size:</b>	2427
<b>Cytogenetics:</b>	5p15.33
<b>RefSeq ORF:</b>	1941
<b>Summary:</b>	The product of this gene is a member of the leucine-rich-repeat (LRR) superfamily of proteins. The protein is localized to the centrosome, a non-membraneous organelle that functions as the major microtubule-organizing center in animal cells. [provided by RefSeq, Jul 2008]

### Product images:



Coomassie blue staining of purified CEP72 protein (Cat# [TP301663]). The protein was produced from HEK293T cells transfected with CEP72 cDNA clone (Cat# [RC201663]) using MegaTran 2.0 (Cat# [TT210002]).