

Product datasheet for **TP301663**

CEP72 (NM_018140) Human Recombinant Protein

Product data:

Product Type: Recombinant Proteins

Description: Recombinant protein of human centrosomal protein 72kDa (CEP72), 20 µg

Species: Human

Expression Host: HEK293T

Expression cDNA Clone or AA Sequence: >RC201663 protein sequence
Red=Cloning site **Green**=Tags(s)

MARAGPRLVLSEEAVRAKSGLGPHRDLAELQSLIPGTYQEKITHLGHSLMSLTGLKSLDLRSNSLVSLE
GIQYLTALESNLNLYNCISSLAIEVFRHLHALTELVDVDFRLNPVWKVEPDYRLFVHLLPKLQQLDDRVPV
ASERKASRLHFAEEDSLDSKESVPASLKEGRPHHPRAKCTEALAKQSLVMDADDEAVLNLIAECEWDLGR
PPGSTSFSQKGREADSRGSQESRHLLSPQLVQYQCGDSGKQGRETRRSSRCGCCLEKMPWSQLCGELPPL
YGAEPASRAPRPHTYFTPHPDSDMTEDSASSQKLDLSGEMVPGPLPAPGKCRKRRMPVGRFQTFSDQEG
LGCPERTHGSSVPKESLSRQDSSES RNGRTL SQPEASETEEQSRGVTDTREPSPGSHSALPGKKTALQA
ALLETLLDLVDRSWGGRSLHSNEAFLAQRHILSSVEEFTAAQDSSAMVGEDVGLSALESKSLQSR LAE
QQQHQHAREMSEVTAELHHTHKELDDLRLQHLDKSLEENSRLKSLLLSMKKEVKSADTAATLNLQIAGLQTS
VKRLCGEIVELKQHLEHYDKIQELTQMLQESHSSLVSTNEHLLQELSQVRAQHRAEVEQMHWSYQELKKT
MALFPSSASHGGCQAC

TRTRPLEQKLISEEDLAANDILDYKDDDDKV

Tag: C-Myc/DDK

Predicted MW: 71.5 kDa

Concentration: >0.05 µg/µL as determined by microplate BCA method

Purity: > 80% as determined by SDS-PAGE and Coomassie blue staining

Buffer: 25 mM Tris-HCl, 100 mM glycine, pH 7.3, 10% glycerol

Preparation: Recombinant protein was captured through anti-DDK affinity column followed by conventional chromatography steps.

Note: For testing in cell culture applications, please filter before use. Note that you may experience some loss of protein during the filtration process.

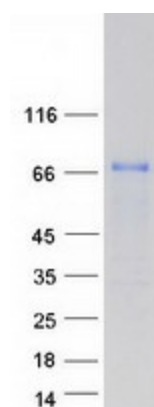
Storage: Store at -80°C.



[View online »](#)

Stability:	Stable for 12 months from the date of receipt of the product under proper storage and handling conditions. Avoid repeated freeze-thaw cycles.
RefSeq:	NP_060610
Locus ID:	55722
UniProt ID:	Q9P209
RefSeq Size:	2427
Cytogenetics:	5p15.33
RefSeq ORF:	1941
Summary:	The product of this gene is a member of the leucine-rich-repeat (LRR) superfamily of proteins. The protein is localized to the centrosome, a non-membraneous organelle that functions as the major microtubule-organizing center in animal cells. [provided by RefSeq, Jul 2008]

Product images:



Coomassie blue staining of purified CEP72 protein (Cat# TP301663). The protein was produced from HEK293T cells transfected with CEP72 cDNA clone (Cat# [RC201663]) using MegaTran 2.0 (Cat# [TT210002]).