

Product datasheet for TP301661L

p27 KIP 1 (CDKN1B) (NM_004064) Human Recombinant Protein

Product data:

Product Type:	Recombinant Proteins
Description:	Recombinant protein of human cyclin-dependent kinase inhibitor 1B (p27, Kip1) (CDKN1B), 1 mg
Species:	Human
Expression Host:	HEK293T
Expression cDNA Clone or AA Sequence:	>RC201661 representing NM_004064 Red=Cloning site Green=Tags(s) MSNVRVSNNGSPSLERMDARQAEHKPKSACRNLFPGVDHEELTRDLEKHCRDMEEASQRKWNFDFQNHKPL EGKYEWQVEVEKGLPEFYRPPRPPKGACKVPAQESQDVSGSRPAAPLIGAPANSEDTLHVDPKTDPSPDS QTGLAEQCAGIRKRPATDDSSSTQNKRANRTEENVSDGSPNAGSVEQTPKKPGLRRRQT TRTRPLEQKLISEEDLAANDILDYKDDDDKV
Tag:	C-Myc/DDK
Predicted MW:	21.9 kDa
Concentration:	>0.05 µg/µL as determined by microplate BCA method
Purity:	> 80% as determined by SDS-PAGE and Coomassie blue staining
Buffer:	25 mM Tris-HCl, 100 mM glycine, pH 7.3, 10% glycerol
Preparation:	Recombinant protein was captured through anti-DDK affinity column followed by conventional chromatography steps.
Note:	For testing in cell culture applications, please filter before use. Note that you may experience some loss of protein during the filtration process.
Storage:	Store at -80°C.
Stability:	Stable for 12 months from the date of receipt of the product under proper storage and handling conditions. Avoid repeated freeze-thaw cycles.
RefSeq:	NP_004055
Locus ID:	1027
UniProt ID:	P46527 , Q6I9V6
RefSeq Size:	2422



[View online »](#)

Cytogenetics: 12p13.1

RefSeq ORF: 594

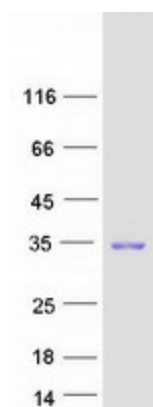
Synonyms: CDKN4; KIP1; MEN1B; MEN4; P27KIP1

Summary: This gene encodes a cyclin-dependent kinase inhibitor, which shares a limited similarity with CDK inhibitor CDKN1A/p21. The encoded protein binds to and prevents the activation of cyclin E-CDK2 or cyclin D-CDK4 complexes, and thus controls the cell cycle progression at G1. The degradation of this protein, which is triggered by its CDK dependent phosphorylation and subsequent ubiquitination by SCF complexes, is required for the cellular transition from quiescence to the proliferative state. Mutations in this gene are associated with multiple endocrine neoplasia type IV (MEN4). [provided by RefSeq, Apr 2014]

Protein Families: Druggable Genome

Protein Pathways: Cell cycle, Chronic myeloid leukemia, ErbB signaling pathway, Pathways in cancer, Prostate cancer, Small cell lung cancer

Product images:



Coomassie blue staining of purified CDKN1B protein (Cat# [TP301661]). The protein was produced from HEK293T cells transfected with CDKN1B cDNA clone (Cat# [RC201661]) using MegaTran 2.0 (Cat# [TT210002]).