

## Product datasheet for **TP301654M**

### **CREG1 (NM\_003851) Human Recombinant Protein**

#### **Product data:**

**Product Type:** Recombinant Proteins  
**Description:** Recombinant protein of human cellular repressor of E1A-stimulated genes 1 (CREG1), 100 µg  
**Species:** Human  
**Expression Host:** HEK293T  
**Expression cDNA Clone or AA Sequence:** >RC201654 protein sequence  
**Red**=Cloning site **Green**=Tags(s)

MAGLSRGSARALLAALLASTLLALLVSPARGRGGRDHGDWDEASRLPPLPPREDAARVARFVTHVSDWGA  
LATISTLEAVRGRPFADVLSLSDGPPGAGSGVPYFYLSPLQLSVSNLQENPYATLTMTLAQTNFCKKHGF  
DPQSPLCVHIMLSGTVTKVNETEMDIAKHSLFIRHPEMKTWPSSHNWFFAKLNITNIWVLDYFGGPKIVT  
PEEYNNVTVQ

**TR**TRPLEQKLISEEDLAANDILDYKDDDDKV

**Tag:** C-Myc/DDK  
**Predicted MW:** 23.9 kDa  
**Concentration:** >0.1 µg/µL as determined by microplate BCA method  
**Purity:** > 80% as determined by SDS-PAGE and Coomassie blue staining  
**Buffer:** 25 mM Tris-HCl, 100 mM glycine, pH 7.3, 10% glycerol  
**Preparation:** Recombinant protein was captured through anti-DDK affinity column followed by conventional chromatography steps.  
**Note:** For testing in cell culture applications, please filter before use. Note that you may experience some loss of protein during the filtration process.  
**Storage:** Store at -80°C.  
**Stability:** Stable for 12 months from the date of receipt of the product under proper storage and handling conditions. Avoid repeated freeze-thaw cycles.  
**RefSeq:** [NP\\_003842](#)  
**Locus ID:** 8804  
**UniProt ID:** [O75629](#)



[View online >](#)

RefSeq Size: 2048

Cytogenetics: 1q24.2

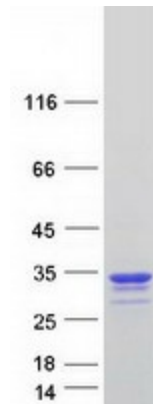
RefSeq ORF: 660

Synonyms: CREG

**Summary:** The adenovirus E1A protein both activates and represses gene expression to promote cellular proliferation and inhibit differentiation. The protein encoded by this gene antagonizes transcriptional activation and cellular transformation by E1A. This protein shares limited sequence similarity with E1A and binds both the general transcription factor TBP and the tumor suppressor pRb in vitro. This gene may contribute to the transcriptional control of cell growth and differentiation. [provided by RefSeq, Jul 2008]

**Protein Families:** Secreted Protein, Transcription Factors, Transmembrane

### Product images:



Coomassie blue staining of purified CREG1 protein (Cat# [TP301654]). The protein was produced from HEK293T cells transfected with CREG1 cDNA clone (Cat# [RC201654]) using MegaTran 2.0 (Cat# [TT210002]).