

Product datasheet for TP301642L

CAPZA1 (NM_006135) Human Recombinant Protein

Product data:

Product Type:	Recombinant Proteins
Description:	Recombinant protein of human capping protein (actin filament) muscle Z-line, alpha 1 (CAPZA1), 1 mg
Species:	Human
Expression Host:	HEK293T
Expression cDNA Clone or AA Sequence:	>RC201642 protein sequence Red=Cloning site Green=Tags(s)

MADFDDRVSDEEKVRIAAKFITHAPPGEFNEVFNDVRLLLNNDNLLREGAAHFAQYNMDQFTPVKIEGY
EDQVLITEHGDLGNSRFLDPRNKISFKFDHLRKEASDPQPEEADGGLKSWRESCDSALRAYVKDHYSNGF
CTVYAKTIDGQQTIACIESHQFQPKNFWNGRWRSEWKFITPPTAQVGVLKIQVHYEDGNVQLVSHK
DVQDSLTVSNEAQTAKFIKIIENAENEYQTAISENYQTMSDTTFKALRRQLPVTRTKIDWNKILSYKIG
KEMQNA

TRTRPLEQKLISEEDLAANDILDYKDDDDKV

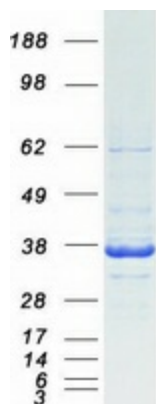
Tag:	C-Myc/DDK
Predicted MW:	32.7 kDa
Concentration:	>0.05 µg/µL as determined by microplate BCA method
Purity:	> 80% as determined by SDS-PAGE and Coomassie blue staining
Buffer:	25 mM Tris-HCl, 100 mM glycine, pH 7.3, 10% glycerol
Preparation:	Recombinant protein was captured through anti-DDK affinity column followed by conventional chromatography steps.
Note:	For testing in cell culture applications, please filter before use. Note that you may experience some loss of protein during the filtration process.
Storage:	Store at -80°C.
Stability:	Stable for 12 months from the date of receipt of the product under proper storage and handling conditions. Avoid repeated freeze-thaw cycles.
RefSeq:	NP_006126
Locus ID:	829



[View online »](#)

UniProt ID:	P52907
RefSeq Size:	2758
Cytogenetics:	1p13.2
RefSeq ORF:	858
Synonyms:	CAPPA1; CAPZ; CAZ1
Summary:	CAPZA1 is a member of the F-actin capping protein alpha subunit family. This gene encodes the alpha subunit of the barbed-end actin binding protein. The protein regulates growth of the actin filament by capping the barbed end of growing actin filaments. [provided by RefSeq, Jul 2008]

Product images:



Coomassie blue staining of purified CAPZA1 protein (Cat# [TP301642]). The protein was produced from HEK293T cells transfected with CAPZA1 cDNA clone (Cat# [RC201642]) using MegaTran 2.0 (Cat# [TT210002]).