

## Product datasheet for **TP301640M**

### **RAB1A (NM\_004161) Human Recombinant Protein**

#### **Product data:**

Product Type:	Recombinant Proteins
Description:	Recombinant protein of human RAB1A, member RAS oncogene family (RAB1A), transcript variant 1, 100 µg
Species:	Human
Expression Host:	HEK293T
Expression cDNA Clone or AA Sequence:	>RC201640 protein sequence <b>Red</b> =Cloning site <b>Green</b> =Tags(s)

MSSMNPEYDYLFKLLIGDSGVGKSCLLRFADDDTYTESYISTIGVDFKIRTIELDGKTIKLQIWDTAGQ  
ERFRTITSSYYRGAHGIIVVYDVTDQESFNNVKQWLQEIDRYASENVNKLIVGNKCDLTTKKVVDYTTAK  
EFADSLGIPFLETSAKNATNVEQSFMTMAAEIKKRMGPGATAGGAEKSNVQIQTSPVKQSGGGCC

**TRTRPLEQKLISEEDLAANDILDYKDDDDKV**

Tag:	C-Myc/DDK
Predicted MW:	22.5 kDa
Concentration:	>0.05 µg/µL as determined by microplate BCA method
Purity:	> 80% as determined by SDS-PAGE and Coomassie blue staining
Buffer:	25 mM Tris-HCl, 100 mM glycine, pH 7.3, 10% glycerol
Preparation:	Recombinant protein was captured through anti-DDK affinity column followed by conventional chromatography steps.
Note:	For testing in cell culture applications, please filter before use. Note that you may experience some loss of protein during the filtration process.
Storage:	Store at -80°C.
Stability:	Stable for 12 months from the date of receipt of the product under proper storage and handling conditions. Avoid repeated freeze-thaw cycles.
RefSeq:	<a href="#">NP_004152</a>
Locus ID:	5861
UniProt ID:	<a href="#">P62820</a> , <a href="#">Q5U0I6</a>



[View online »](#)

RefSeq Size: 2648

Cytogenetics: 2p14

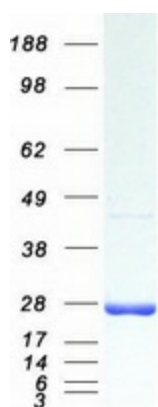
RefSeq ORF: 615

Synonyms: RAB1; YPT1

**Summary:** This gene encodes a member of the Ras superfamily of GTPases. Members of the gene family cycle between inactive GDP-bound and active GTP-bound forms. This small GTPase controls vesicle traffic from the endoplasmic reticulum to the Golgi apparatus. Multiple alternatively spliced transcript variants have been identified for this gene which encode different protein isoforms. [provided by RefSeq, Oct 2008]

**Protein Families:** Druggable Genome

### Product images:



Coomassie blue staining of purified RAB1A protein (Cat# [TP301640]). The protein was produced from HEK293T cells transfected with RAB1A cDNA clone (Cat# [RC201640]) using MegaTran 2.0 (Cat# [TT210002]).