

## Product datasheet for TP301636

### SF2 (SRSF1) (NM\_006924) Human Recombinant Protein

#### Product data:

Product Type:	Recombinant Proteins
Description:	Recombinant protein of human splicing factor, arginine/serine-rich 1 (SFRS1), transcript variant 1, 20 µg
Species:	Human
Expression Host:	HEK293T
Expression cDNA Clone or AA Sequence:	>RC201636 protein sequence <b>Red</b> =Cloning site <b>Green</b> =Tags(s)
	<p>MSGGGVIRGPAGNNDCRIYVGNLPPDIRTKDIEDVFYKYGAIRDIDLKNRRGGPPFAFVEFEDPRDAEDA VYGRDGYDYDGYRLRVEFPRSGRGTGRGGGGGGGGGAPRGRYGPSSRRSENRVVWSGLPPSGSWQDLKDH MREAGDVCYADVYRDGTGVVEFVRKEDMTYAVRKLNTKFRSHEGETAYIRVKVDGPRSPSYGRSRSR SRSRSRSRSNSRSRSYSPRRSRGSPRYSRHSRSRSRT</p> <p><b>TRTRPLEQKLISEEDLAANDILDYKDDDDKV</b></p>
Tag:	C-Myc/DDK
Predicted MW:	27.6 kDa
Concentration:	>0.05 µg/µL as determined by microplate BCA method
Purity:	> 80% as determined by SDS-PAGE and Coomassie blue staining
Buffer:	25 mM Tris-HCl, 100 mM glycine, pH 7.3, 10% glycerol
Preparation:	Recombinant protein was captured through anti-DDK affinity column followed by conventional chromatography steps.
Note:	For testing in cell culture applications, please filter before use. Note that you may experience some loss of protein during the filtration process.
Storage:	Store at -80°C.
Stability:	Stable for 12 months from the date of receipt of the product under proper storage and handling conditions. Avoid repeated freeze-thaw cycles.
RefSeq:	<a href="#">NP_008855</a>
Locus ID:	6426



[View online »](#)

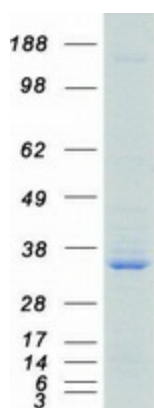
UniProt ID: [Q07955](#)  
RefSeq Size: 5468  
Cytogenetics: 17q22  
RefSeq ORF: 744  
Synonyms: ASF; SF2; SF2p33; SFRS1; SRp30a

**Summary:** This gene encodes a member of the arginine/serine-rich splicing factor protein family. The encoded protein can either activate or repress splicing, depending on its phosphorylation state and its interaction partners. Multiple transcript variants have been found for this gene. There is a pseudogene of this gene on chromosome 13. [provided by RefSeq, Jun 2014]

**Protein Families:** Stem cell - Pluripotency

**Protein Pathways:** Spliceosome

### Product images:



Coomassie blue staining of purified SRSF1 protein (Cat# TP301636). The protein was produced from HEK293T cells transfected with SRSF1 cDNA clone (Cat# [RC201636]) using MegaTran 2.0 (Cat# [TT210002]).