

Product datasheet for **TP301629L**

Beclin 1 (BECN1) (NM_003766) Human Recombinant Protein

Product data:

Product Type: Recombinant Proteins

Description: Recombinant protein of human beclin 1, autophagy related (BECN1), 1 mg

Species: Human

Expression Host: HEK293T

Expression cDNA Clone or AA Sequence: >RC201629 representing NM_003766

Red=Cloning site Green=Tags(s)

MEGSKTSNNSTMQVSFVCQRCSQPLKLDTSFKILDRVTIQELTAPLLTTAQAKPGETQEEETNSGEEPFIE
ETPRQDGVSRRFIPPARMMSTESANSFTLIGEASDGGTMENLSRRLKVTGDLFDIMSGQTDVDHPLCEEC
TDTLLDQLDTQLNVTENECQNYKRCLEILEQMNEDDSEQLQEMELKELALEEERLIQELEDVEKNRIVAE
NLEKVQAEAERLDQEEAQYQREYSEFKRQQLDDELKSVENQMRYAQQLDKLKTNVFNATFHIWHS
QFGTINNFRGLPSVPVEWNEINAAWGQTVLLLHALANKMGLKFQRYRLVPYGNHSYLESITDKSKELP
LYCSGGLRFFWDNKFHAMVAFLDCVQQFKEEVEKGETRFCLPYRMDVEKGKIEDTGGSGGSYSIKTFN
SEEQWTKALKFMLTNLKWGLAWSSQFYNK

TRTRPLEQKLISEEDLAANDILDYKDDDDKV

Tag: C-Myc/DDK

Predicted MW: 51.7 kDa

Concentration: >0.05 µg/µL as determined by microplate BCA method

Purity: > 80% as determined by SDS-PAGE and Coomassie blue staining

Buffer: 25 mM Tris-HCl, 100 mM glycine, pH 7.3, 10% glycerol

Bioactivity: Enzyme substrate (PMID: [25642769](#))

Preparation: Recombinant protein was captured through anti-DDK affinity column followed by conventional chromatography steps.

Note: For testing in cell culture applications, please filter before use. Note that you may experience some loss of protein during the filtration process.

Storage: Store at -80°C.

Stability: Stable for 12 months from the date of receipt of the product under proper storage and handling conditions. Avoid repeated freeze-thaw cycles.



[View online >](#)

RefSeq: [NP_003757](#)

Locus ID: 8678

UniProt ID: [Q14457](#), [A0A024R1X5](#)

RefSeq Size: 2144

Cytogenetics: 17q21.31

RefSeq ORF: 1350

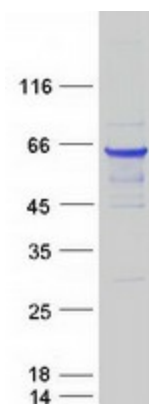
Synonyms: ATG6; beclin1; VPS30

Summary: This gene encodes a protein that regulates autophagy, a catabolic process of degradation induced by starvation. The encoded protein is a component of the phosphatidylinositol-3-kinase (PI3K) complex which mediates vesicle-trafficking processes. This protein is thought to play a role in multiple cellular processes, including tumorigenesis, neurodegeneration and apoptosis. Alternative splicing results in multiple transcript variants. [provided by RefSeq, Sep 2015]

Protein Families: Druggable Genome

Protein Pathways: Regulation of autophagy

Product images:



Coomassie blue staining of purified BECN1 protein (Cat# [TP301629]). The protein was produced from HEK293T cells transfected with BECN1 cDNA clone (Cat# [RC201629]) using MegaTran 2.0 (Cat# [TT210002]).