

## Product datasheet for TP301616

### S100A4 (NM\_019554) Human Recombinant Protein

#### Product data:

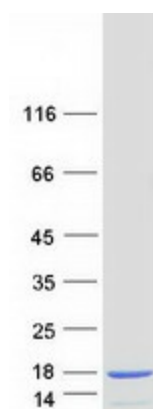
Product Type:	Recombinant Proteins
Description:	Recombinant protein of human S100 calcium binding protein A4 (S100A4), transcript variant 2, 20 µg
Species:	Human
Expression Host:	HEK293T
Expression cDNA Clone or AA Sequence:	>RC201616 protein sequence <b>Red</b> =Cloning site <b>Green</b> =Tags(s)
	MACPLEKALDVMVSTFHKYSGKEGDKFKLNKSELKELLTRELPSFLGKRTDEAAFQKLMSNLDNRDNEV DFQEYCVFLSCIAMMCNEFFEGFPDKQPRKK
	<b>TR</b> TRPLEQKLISEEDLAANDILDYKDDDDKV
Tag:	C-Myc/DDK
Predicted MW:	11.5 kDa
Concentration:	>0.05 µg/µL as determined by microplate BCA method
Purity:	> 80% as determined by SDS-PAGE and Coomassie blue staining
Buffer:	25 mM Tris-HCl, 100 mM glycine, pH 7.3, 10% glycerol
Preparation:	Recombinant protein was captured through anti-DDK affinity column followed by conventional chromatography steps.
Note:	For testing in cell culture applications, please filter before use. Note that you may experience some loss of protein during the filtration process.
Storage:	Store at -80°C.
Stability:	Stable for 12 months from the date of receipt of the product under proper storage and handling conditions. Avoid repeated freeze-thaw cycles.
RefSeq:	<a href="#">NP_062427</a>
Locus ID:	6275
UniProt ID:	<a href="#">P26447</a>
RefSeq Size:	564



[View online »](#)

Cytogenetics:	1q21.3
RefSeq ORF:	303
Synonyms:	18A2; 42A; CAPL; FSP1; MTS1; P9KA; PEL98
Summary:	The protein encoded by this gene is a member of the S100 family of proteins containing 2 EF-hand calcium-binding motifs. S100 proteins are localized in the cytoplasm and/or nucleus of a wide range of cells, and involved in the regulation of a number of cellular processes such as cell cycle progression and differentiation. S100 genes include at least 13 members which are located as a cluster on chromosome 1q21. This protein may function in motility, invasion, and tubulin polymerization. Chromosomal rearrangements and altered expression of this gene have been implicated in tumor metastasis. Multiple alternatively spliced variants, encoding the same protein, have been identified. [provided by RefSeq, Jul 2008]

### Product images:



Coomassie blue staining of purified S100A4 protein (Cat# TP301616). The protein was produced from HEK293T cells transfected with S100A4 cDNA clone (Cat# [RC201616]) using MegaTran 2.0 (Cat# [TT210002]).