

## Product datasheet for TP301610M

### ornithine aminotransferase (OAT) (NM\_000274) Human Recombinant Protein

#### Product data:

Product Type:	Recombinant Proteins
Description:	Purified recombinant protein of Homo sapiens ornithine aminotransferase (gyrate atrophy) (OAT), nuclear gene encoding mitochondrial protein, 100 µg
Species:	Human
Expression Host:	HEK293T
Expression cDNA Clone or AA Sequence:	>RC201610 protein sequence <b>Red</b> =Cloning site <b>Green</b> =Tags(s)
	<p>MFSKLAHLQRFVLSRGVHSSVASATSVATKKTVQGPPTSDDIFEREYKYGAHNYHPLPVALERGGKIYL WDVEGRKYFDLSSYSAVNQGHCHPKIVNALKSQVDKLTLSRAFYNVNLGEYEEYITKLFNYHKVLPMN TGVEAGETACKLARKWGYTVKGIQKYKAKIVFAAGNFWGRTLSAISSSTDPTSVDGFGPFMPGFDIIPYN DLPALERALQDPNVAAFMVEPIQGEAGVVPDPGYLMGVRELCTRHHQVLFIADEIQTGLARTGRWLAVDY ENVRPDIVLLGKALSGGLYPVSAVLCDDDIMLTIKPGEHGSTYGGNPLGCRVAIAALEVLEEENLAENAD KLGIIIRNELMKLPSDVVTAVRGKLLNAIVIKETKDWDAAWKVCLRLRDNGLLAKPTHGDIIRFAPPLVI KEDELRESIEIINKTILSF</p> <p><b>TRTRPLEQKLISEEDLAANDILDYKDDDDKV</b></p>
Tag:	C-Myc/DDK
Predicted MW:	48.4 kDa
Concentration:	>0.05 µg/µL as determined by microplate BCA method
Purity:	> 80% as determined by SDS-PAGE and Coomassie blue staining
Buffer:	25 mM Tris-HCl, 100 mM glycine, pH 7.3, 10% glycerol
Preparation:	Recombinant protein was captured through anti-DDK affinity column followed by conventional chromatography steps.
Note:	For testing in cell culture applications, please filter before use. Note that you may experience some loss of protein during the filtration process.
Storage:	Store at -80°C.
Stability:	Stable for 12 months from the date of receipt of the product under proper storage and handling conditions. Avoid repeated freeze-thaw cycles.



[View online »](#)

RefSeq: [NP\\_000265](#)

Locus ID: 4942

UniProt ID: [P04181](#), [A0A140VJQ4](#)

RefSeq Size: 2102

Cytogenetics: 10q26.13

RefSeq ORF: 1317

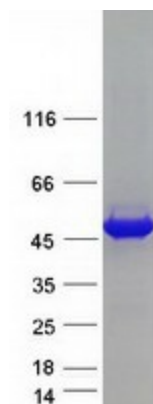
Synonyms: GACR; HOGA; OATASE; OKT

**Summary:** This gene encodes the mitochondrial enzyme ornithine aminotransferase, which is a key enzyme in the pathway that converts arginine and ornithine into the major excitatory and inhibitory neurotransmitters glutamate and GABA. Mutations that result in a deficiency of this enzyme cause the autosomal recessive eye disease Gyrate Atrophy. Alternatively spliced transcript variants encoding different isoforms have been described. Related pseudogenes have been defined on the X chromosome. [provided by RefSeq, Jan 2010]

**Protein Families:** Druggable Genome

**Protein Pathways:** Arginine and proline metabolism, Metabolic pathways

### Product images:



Coomassie blue staining of purified OAT protein (Cat# [TP301610]). The protein was produced from HEK293T cells transfected with OAT cDNA clone (Cat# [RC201610]) using MegaTran 2.0 (Cat# [TT210002]).