

Product datasheet for TP301605L

Proteasome 20S beta 6 (PSMB6) (NM_002798) Human Recombinant Protein

Product data:

Product Type: Recombinant Proteins
Description: Recombinant protein of human proteasome (prosome, macropain) subunit, beta type, 6 (PSMB6), 1 mg

Species: Human

Expression Host: HEK293T

Expression cDNA Clone or AA Sequence: >RC201605 protein sequence
 Red=Cloning site Green=Tags(s)

MAATLLAARGAGPAPAWGPEAFTPDWESREVSTGTTIMAVQFDGGVVLGADSRITTTGSYIANRVTDKLTP
 IHDRIFCCRSGSAADTQAVADAVTYQLGFHSIELNEPPLVHTAASLFKEMCYRYREDLMAGIIIAGWDPQ
 EGGQVYSVPMGGMMVRQSFAIGGSGSSYIYGVDATYREGMTKEECLQFTANALALAMERDSSGGVIRL
 AAIAESGVERQVLLGDQIPKFAVATLPPA

TRTRPLEQKLISEEDLAANDILDYKDDDDKV

Tag: C-Myc/DDK

Predicted MW: 25.2 kDa

Concentration: >0.05 µg/µL as determined by microplate BCA method

Purity: > 80% as determined by SDS-PAGE and Coomassie blue staining

Buffer: 25 mM Tris-HCl, 100 mM glycine, pH 7.3, 10% glycerol

Preparation: Recombinant protein was captured through anti-DDK affinity column followed by conventional chromatography steps.

Note: For testing in cell culture applications, please filter before use. Note that you may experience some loss of protein during the filtration process.

Storage: Store at -80°C.

Stability: Stable for 12 months from the date of receipt of the product under proper storage and handling conditions. Avoid repeated freeze-thaw cycles.

RefSeq: [NP_002789](#)

Locus ID: 5694



[View online »](#)

UniProt ID: [P28072](#), [Q6IAT9](#)

RefSeq Size: 869

Cytogenetics: 17p13.2

RefSeq ORF: 717

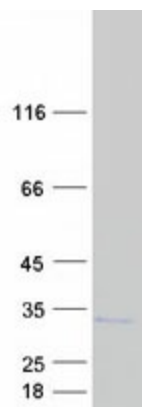
Synonyms: DELTA; LMPY; Y

Summary: The proteasome is a multicatalytic proteinase complex with a highly ordered ring-shaped 20S core structure. The core structure is composed of 4 rings of 28 non-identical subunits; 2 rings are composed of 7 alpha subunits and 2 rings are composed of 7 beta subunits. Proteasomes are distributed throughout eukaryotic cells at a high concentration and cleave peptides in an ATP/ubiquitin-dependent process in a non-lysosomal pathway. The encoded protein is a member of the proteasome B-type family, also known as the T1B family, and is a 20S core beta subunit in the proteasome. Alternatively spliced transcript variants encoding multiple isoforms have been observed for this gene. [provided by RefSeq, Jul 2012]

Protein Families: Druggable Genome, Protease

Protein Pathways: Proteasome

Product images:



Coomassie blue staining of purified PSMB6 protein (Cat# [TP301605]). The protein was produced from HEK293T cells transfected with PSMB6 cDNA clone (Cat# [RC201605]) using MegaTran 2.0 (Cat# [TT210002]).