

## Product datasheet for **TP301605**

### Proteasome 20S beta 6 (PSMB6) (NM\_002798) Human Recombinant Protein

#### Product data:

Product Type:	Recombinant Proteins
Description:	Recombinant protein of human proteasome (prosome, macropain) subunit, beta type, 6 (PSMB6), 20 µg
Species:	Human
Expression Host:	HEK293T
Expression cDNA Clone or AA Sequence:	>RC201605 protein sequence <b>Red</b> =Cloning site <b>Green</b> =Tags(s)

MAATLLAARGAGPAPAWGPEAFTPDWESREVSTGTTIMAVQFDGGVVLGADSRRTTGSYIANRVTDKLTPIHDRIFCCRSRSAADTQAVADAVTYQLGFHSHIELNEPPLVHTAASLFKEMCYRYREDLMAGIIIAGWDPQEGGQVYSVPMGGMMVRQSFAIGGSGSSYIYGVDATYREGMTKEECLQFTANALALAMERDGSSGGVIRLAAIAESGVERQVLLGDQIPKFAVATLPPA

**TRTRPLEQKLISEEDLAANDILDYKDDDDKV**

Tag:	C-Myc/DDK
Predicted MW:	25.2 kDa
Concentration:	>0.05 µg/µL as determined by microplate BCA method
Purity:	> 80% as determined by SDS-PAGE and Coomassie blue staining
Buffer:	25 mM Tris-HCl, 100 mM glycine, pH 7.3, 10% glycerol
Preparation:	Recombinant protein was captured through anti-DDK affinity column followed by conventional chromatography steps.
Note:	For testing in cell culture applications, please filter before use. Note that you may experience some loss of protein during the filtration process.
Storage:	Store at -80°C.
Stability:	Stable for 12 months from the date of receipt of the product under proper storage and handling conditions. Avoid repeated freeze-thaw cycles.
RefSeq:	<u><a href="#">NP_002789</a></u>
Locus ID:	5694



[View online »](#)

UniProt ID: [P28072](#)

RefSeq Size: 869

Cytogenetics: 17p13.2

RefSeq ORF: 717

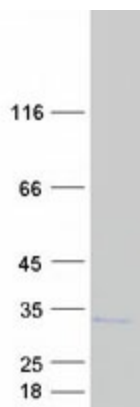
Synonyms: DELTA; LMPY; Y

**Summary:** The proteasome is a multicatalytic proteinase complex with a highly ordered ring-shaped 20S core structure. The core structure is composed of 4 rings of 28 non-identical subunits; 2 rings are composed of 7 alpha subunits and 2 rings are composed of 7 beta subunits. Proteasomes are distributed throughout eukaryotic cells at a high concentration and cleave peptides in an ATP/ubiquitin-dependent process in a non-lysosomal pathway. The encoded protein is a member of the proteasome B-type family, also known as the T1B family, and is a 20S core beta subunit in the proteasome. Alternatively spliced transcript variants encoding multiple isoforms have been observed for this gene. [provided by RefSeq, Jul 2012]

**Protein Families:** Druggable Genome, Protease

**Protein Pathways:** Proteasome

### Product images:



Coomassie blue staining of purified PSMB6 protein (Cat# TP301605). The protein was produced from HEK293T cells transfected with PSMB6 cDNA clone (Cat# [RC201605]) using MegaTran 2.0 (Cat# [TT210002]).