

Product datasheet for **TP301604L**

Lamin B1 (LMNB1) (NM_005573) Human Recombinant Protein

Product data:

Product Type:	Recombinant Proteins
Description:	Recombinant protein of human lamin B1 (LMNB1), 1 mg
Species:	Human
Expression Host:	HEK293T
Expression cDNA Clone or AA Sequence:	>RC201604 protein sequence Red =Cloning site Green =Tags(s)

MATATPVPPRMGSRAGGPTTPLSPTRLSRLQEKEELRELNDR LAVYIDKVRSL ETENSALQLQVTEREEV
RGRELTGLKALYETELADARRALDDTARERAKLQIELGKCKAEHDQ LLLNYAKKESDLNGAQIKLREYEA
ALNSKDAALATALGDKKSLEGDLEDLKDQIAQLEASLAAAKKQLADETLLKVDLENRCQSLTEDLEFRKS
MYEEEEINETRRKHETRLVEVDSGRQIEYKLAQALHEMREQHDAQVRLYKEELEQTYHAKLENARLSSE
MNTSTVNSAREELMESRMRIESLSSQLSNLQKESRACLERIQELEDLLAKEKDNSRRMLTDKEREMAEIR
DQMQQQLNDYEQLLDVKLALDMEISAYRKLQGEERLKLSPSSRVTVSRASSRSVTRTRGKRKRVD
VEESEASSVSISHSASATGNVCIEEIDVDGKFIRLKN TSEQDQPMGGWEMIRKIGDTSVSYKYTSRYVL
KAGQVTIWAANAGVTASPPTDLIWKNSWGTGEDVKVILKNSQGE EVAQRSTVFKTTIPEEEEEEEEA
AGVWVEELFHQQGTPRASNRSCAIM

TRTRPLEQKLISEEDLAANDILDYKDDDDKV

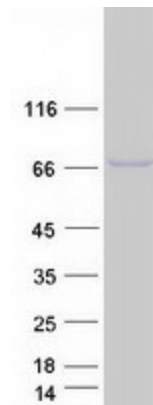
Tag:	C-Myc/DDK
Predicted MW:	66.2 kDa
Concentration:	>0.1 µg/µL as determined by microplate BCA method
Purity:	> 80% as determined by SDS-PAGE and Coomassie blue staining
Buffer:	25 mM Tris-HCl, 100 mM glycine, pH 7.3, 10% glycerol
Bioactivity:	Proteolysis substrate (PMID: 27079252)
Preparation:	Recombinant protein was captured through anti-DDK affinity column followed by conventional chromatography steps.
Note:	For testing in cell culture applications, please filter before use. Note that you may experience some loss of protein during the filtration process.
Storage:	Store at -80°C.



[View online »](#)

Stability:	Stable for 12 months from the date of receipt of the product under proper storage and handling conditions. Avoid repeated freeze-thaw cycles.
RefSeq:	<u>NP_005564</u>
Locus ID:	4001
UniProt ID:	<u>P20700</u>
RefSeq Size:	3420
Cytogenetics:	5q23.2
RefSeq ORF:	1758
Synonyms:	ADLD; LMN; LMN2; LMNB; MCPH26
Summary:	This gene encodes one of the two B-type lamin proteins and is a component of the nuclear lamina. A duplication of this gene is associated with autosomal dominant adult-onset leukodystrophy (ADLD). Alternative splicing results in multiple transcript variants. [provided by RefSeq, Dec 2015]

Product images:



Coomassie blue staining of purified LMNB1 protein (Cat# [TP301604]). The protein was produced from HEK293T cells transfected with LMNB1 cDNA clone (Cat# [RC201604]) using MegaTran 2.0 (Cat# [TT210002]).