

## Product datasheet for **TP301604**

### Lamin B1 (LMNB1) (NM\_005573) Human Recombinant Protein

#### Product data:

Product Type:	Recombinant Proteins
Description:	Recombinant protein of human lamin B1 (LMNB1), 20 µg
Species:	Human
Expression Host:	HEK293T
Expression cDNA Clone or AA Sequence:	>RC201604 protein sequence <b>Red</b> =Cloning site <b>Green</b> =Tags(s)

MATATPVPPRMGSRAGGPTTPLSPTRLSRLQEKEELRELNDRDLAVYIDKVRSLLETENSALQLQVTEREEV  
RGRELTGLKALYETELADARRALDDTARERAKLQIELGKCKAEHDQLLLNYAKKESDLNGAQIKLREYEA  
ALNSKDAALATALGDKKSLEGDLEDLKDQIAQLEASLAAAKQLADETLKVDLENRCQSLTEDLEFRKS  
MYEEEINETRRKHETRLVEVDSGRQIEYKYLAQALHEMREQHDAQVRLYKEELEQTYHAKLENARLSSE  
MNTSTVNSAREELMESRMRIESLSSQLSNLQKESRACLRIQELEDLLAKEKDNSRRMLTDKEREMAEIR  
DQMQQQLNDYEQLLDVKLALDMEISAYRKLQGEERLKLSPSPSSRVTVSRASSRSVRTRGKRKRVD  
VEESEASSVSISHSATGNVCIEEIDVDGKFIKNTSEQDQPMGGWEMIRKIGDTSVSYKYTSRYVL  
KAGQTVTIWAANAGVTASPPTDLIWKQNSWGTGEDVKVILKNSQGEEVAQRSTVFKTTIPEEEEEEEEA  
AGWVVEELFHQQGTPRASNRSCAIM

**TRTRPLEQKLISEEDLAANDILDYKDDDDKV**

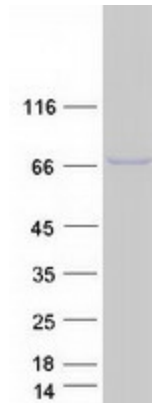
Tag:	C-Myc/DDK
Predicted MW:	66.2 kDa
Concentration:	>0.1 µg/µL as determined by microplate BCA method
Purity:	> 80% as determined by SDS-PAGE and Coomassie blue staining
Buffer:	25 mM Tris-HCl, 100 mM glycine, pH 7.3, 10% glycerol
Bioactivity:	Proteolysis substrate (PMID: <a href="#">27079252</a> )
Preparation:	Recombinant protein was captured through anti-DDK affinity column followed by conventional chromatography steps.
Note:	For testing in cell culture applications, please filter before use. Note that you may experience some loss of protein during the filtration process.
Storage:	Store at -80°C.



[View online »](#)

<b>Stability:</b>	Stable for 12 months from the date of receipt of the product under proper storage and handling conditions. Avoid repeated freeze-thaw cycles.
<b>RefSeq:</b>	<a href="#">NP_005564</a>
<b>Locus ID:</b>	4001
<b>UniProt ID:</b>	<a href="#">P20700</a>
<b>RefSeq Size:</b>	3420
<b>Cytogenetics:</b>	5q23.2
<b>RefSeq ORF:</b>	1758
<b>Synonyms:</b>	ADLD; LMN; LMN2; LMNB; MCPH26
<b>Summary:</b>	This gene encodes one of the two B-type lamin proteins and is a component of the nuclear lamina. A duplication of this gene is associated with autosomal dominant adult-onset leukodystrophy (ADLD). Alternative splicing results in multiple transcript variants. [provided by RefSeq, Dec 2015]

### Product images:



Coomassie blue staining of purified LMNB1 protein (Cat# TP301604). The protein was produced from HEK293T cells transfected with LMNB1 cDNA clone (Cat# [RC201604]) using MegaTran 2.0 (Cat# [TT210002]).