

Product datasheet for TP301581M

CFDP1 (NM_006324) Human Recombinant Protein

Product data:

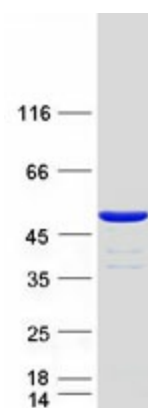
| | |
|---------------------------------------|--|
| Product Type: | Recombinant Proteins |
| Description: | Recombinant protein of human craniofacial development protein 1 (CFDP1), 100 µg |
| Species: | Human |
| Expression Host: | HEK293T |
| Expression cDNA Clone or AA Sequence: | >RC201581 protein sequence Red =Cloning site Green =Tags(s) |
| | MEEFDSEDFSTSEEDDYVPSGGGEYSEDDVNELVKEDVDGEEQTQKTQGKKRKAQSIPARKRRQGGLSL EEEEEDANSESEGSSSEEDDAAEQEKIGSEDARKKKEDELWASFLNDVGPKSKVPPSTQVKKGEETE ETSSSKLLVKAEELEKPKETEKVKITKVDFDFAGEEVRVTKEVDATSKEAKSFFKQNEKEKPQANVPSALP SLPAGSGLKRSSGMSLLGKIGAKKQKMSTLEKSKLDWESFKEEGIGEELAIHNRGKEGYIERKAFLDR VDHRQFEIERDLRLSKMKP |
| | TR TRPLEQKLISEEDLAANDILDYKDDDDKV |
| Tag: | C-Myc/DDK |
| Predicted MW: | 33.4 kDa |
| Concentration: | >0.05 µg/µL as determined by microplate BCA method |
| Purity: | > 80% as determined by SDS-PAGE and Coomassie blue staining |
| Buffer: | 25 mM Tris-HCl, 100 mM glycine, pH 7.3, 10% glycerol |
| Preparation: | Recombinant protein was captured through anti-DDK affinity column followed by conventional chromatography steps. |
| Note: | For testing in cell culture applications, please filter before use. Note that you may experience some loss of protein during the filtration process. |
| Storage: | Store at -80°C. |
| Stability: | Stable for 12 months from the date of receipt of the product under proper storage and handling conditions. Avoid repeated freeze-thaw cycles. |
| RefSeq: | <u>NP_006315</u> |
| Locus ID: | 10428 |



[View online »](#)

| | |
|---------------|--|
| UniProt ID: | Q9UEE9 |
| RefSeq Size: | 1281 |
| Cytogenetics: | 16q23.1 |
| RefSeq ORF: | 897 |
| Synonyms: | BCNT; BUCENTAUR; CENP-29; CP27; p97; SWC5; Yeti |
| Summary: | May play a role during embryogenesis.[UniProtKB/Swiss-Prot Function] |

Product images:



Coomassie blue staining of purified CFDP1 protein (Cat# [TP301581]). The protein was produced from HEK293T cells transfected with CFDP1 cDNA clone (Cat# [RC201581]) using MegaTran 2.0 (Cat# [TT210002]).