

Product datasheet for **TP301565L**

CSRP2 (NM_001321) Human Recombinant Protein

Product data:

Product Type: Recombinant Proteins

Description: Recombinant protein of human cysteine and glycine-rich protein 2 (CSRP2), 1 mg

Species: Human

Expression Host: HEK293T

**Expression cDNA Clone
or AA Sequence:** >RC201565 protein sequence
Red=Cloning site **Green**=Tags(s)

MPWGGGNKCGACGRVYHAEVQCDGRSFHRCCFLCMVCRKNLDSTTVAIHDEEYCKSCYGGKKGPKG
YGYGQGAGTLNMDRGERLGKIPESVQPHRPTTNPNTSKFAQKYGGAEKCSRCGDSVYAAEKIIGAGKPWH
KNCFRCAKCGKSLESTTLTEKEGEIYCKGKYAKNFGPKGFGYGGAGALVHAQ

TRTRPLEQKLISEEDLAANDILDYKDDDDKV

Tag: C-Myc/DDK

Predicted MW: 20.8 kDa

Concentration: >0.05 µg/µL as determined by microplate BCA method

Purity: > 80% as determined by SDS-PAGE and Coomassie blue staining

Buffer: 25 mM Tris-HCl, 100 mM glycine, pH 7.3, 10% glycerol

Preparation: Recombinant protein was captured through anti-DDK affinity column followed by conventional chromatography steps.

Note: For testing in cell culture applications, please filter before use. Note that you may experience some loss of protein during the filtration process.

Storage: Store at -80°C.

Stability: Stable for 12 months from the date of receipt of the product under proper storage and handling conditions. Avoid repeated freeze-thaw cycles.

RefSeq: [NP_001312](#)

Locus ID: 1466

UniProt ID: [Q16527](#), [A0A024RBB5](#)

RefSeq Size: 940



[View online »](#)

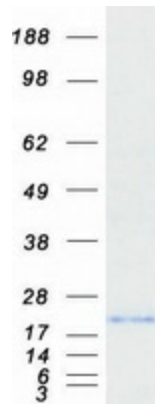
Cytogenetics: 12q21.2

RefSeq ORF: 579

Synonyms: CRP2; LMO5; SmLIM

Summary: CSRP2 is a member of the CSRP family of genes, encoding a group of LIM domain proteins, which may be involved in regulatory processes important for development and cellular differentiation. CRP2 contains two copies of the cysteine-rich amino acid sequence motif (LIM) with putative zinc-binding activity, and may be involved in regulating ordered cell growth. Other genes in the family include CSRP1 and CSRP3. Alternative splicing results in multiple transcript variants. [provided by RefSeq, Jul 2014]

Product images:



Coomassie blue staining of purified CSRP2 protein (Cat# [TP301565]). The protein was produced from HEK293T cells transfected with CSRP2 cDNA clone (Cat# [RC201565]) using MegaTran 2.0 (Cat# [TT210002]).