

Product datasheet for TP301556

PRP18 homolog (PRPF18) (NM_003675) Human Recombinant Protein

Product data:

Product Type:	Recombinant Proteins
Description:	Recombinant protein of human PRP18 pre-mRNA processing factor 18 homolog (<i>S. cerevisiae</i>) (PRPF18), 20 µg
Species:	Human
Expression Host:	HEK293T
Expression cDNA Clone or AA Sequence:	>RC201556 protein sequence Red=Cloning site Green=Tags(s)

MDILKSEILRKRQLVEDRNLLVENKKYFKRSELAKKEEEAYFERCGYKIQPKEEDQKPLTSSNPVLELEL
AEEKLPMTLSRQEVIRRLRERGEPIRLFGETDYDAFQRLRKEILTPEV NKGLRNDLKAALDKIDQQYLN
EIVGGQEPGEEDTQNDLKVHEENTTIEELEALGESLGKGGDDHKDMDIITKFLKFLG VVAKELNAREDY
KRSVQGKLNSATQKQTESYLRPLFRKLRKRNLPADIKESITDIIFMLQREYVKANDAYLQMAIGNAPWP
IGVTMVG I HARTGREKIFSKHVAHV LND ETQRKYIQGLKRLMTICQKHFP TDPSKCV EYNAL

TRTRPLEQKLISEEDLAANDILDYKDDDDKV

Tag:	C-Myc/DDK
Predicted MW:	39.7 kDa
Concentration:	>0.05 µg/µL as determined by microplate BCA method
Purity:	> 80% as determined by SDS-PAGE and Coomassie blue staining
Buffer:	25 mM Tris-HCl, 100 mM glycine, pH 7.3, 10% glycerol
Preparation:	Recombinant protein was captured through anti-DDK affinity column followed by conventional chromatography steps.
Note:	For testing in cell culture applications, please filter before use. Note that you may experience some loss of protein during the filtration process.
Storage:	Store at -80°C.
Stability:	Stable for 12 months from the date of receipt of the product under proper storage and handling conditions. Avoid repeated freeze-thaw cycles.
RefSeq:	NP_003666
Locus ID:	8559



[View online »](#)

UniProt ID: [Q99633](#)

RefSeq Size: 1711

Cytogenetics: 10p13

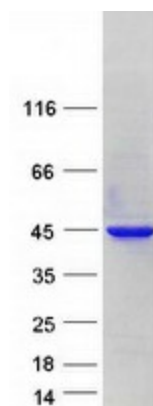
RefSeq ORF: 1026

Synonyms: hPrp18; PRP18

Summary: Pre-mRNA splicing occurs in 2 sequential transesterification steps. The protein encoded by this gene is found to be essential for the catalytic step II in pre-mRNA splicing process. It is found in the spliceosome, and contains seven WD repeats, which function in protein-protein interactions. This protein has a sequence similarity to the yeast splicing factor Prp18. [provided by RefSeq, Jul 2008]

Protein Pathways: Spliceosome

Product images:



Coomassie blue staining of purified PRPF18 protein (Cat# TP301556). The protein was produced from HEK293T cells transfected with PRPF18 cDNA clone (Cat# [RC201556]) using MegaTran 2.0 (Cat# [TT210002]).