

Product datasheet for **TP301555M**

RAB13 (NM_002870) Human Recombinant Protein

Product data:

Product Type: Recombinant Proteins

Description: Recombinant protein of human RAB13, member RAS oncogene family (RAB13), 100 µg

Species: Human

Expression Host: HEK293T

**Expression cDNA Clone
or AA Sequence:** >RC201555 protein sequence
Red=Cloning site **Green**=Tags(s)

MAKAYDHLFKLLIGDSGVGKTCIIIRFAEDNFNNTYISTIGIDFKIRTVDIEGKKIKLQVWDTAGQERF
KTITTAYYRGAMGIIIVYDITDEKSFENIQNWMKSIKENASAGVERLLLGNKCDMEAKRKVQKEQADKLA
REHGIRFFETSAKSSMNVDEAFSSLARDILLKSGGRRSGNGNKPPSTDLKTCDDKNTNKCSLG

TRTRPLEQKLISEEDLAANDILDYKDDDDKV

Tag: C-Myc/DDK

Predicted MW: 22.6 kDa

Concentration: >0.05 µg/µL as determined by microplate BCA method

Purity: > 80% as determined by SDS-PAGE and Coomassie blue staining

Buffer: 25 mM Tris-HCl, 100 mM glycine, pH 7.3, 10% glycerol

Preparation: Recombinant protein was captured through anti-DDK affinity column followed by conventional chromatography steps.

Note: For testing in cell culture applications, please filter before use. Note that you may experience some loss of protein during the filtration process.

Storage: Store at -80°C.

Stability: Stable for 12 months from the date of receipt of the product under proper storage and handling conditions. Avoid repeated freeze-thaw cycles.

RefSeq: [NP_002861](#)

Locus ID: 5872

UniProt ID: [P51153](#), [Q504R6](#)

RefSeq Size: 1235



[View online »](#)

Cytogenetics: 1q21.3

RefSeq ORF: 609

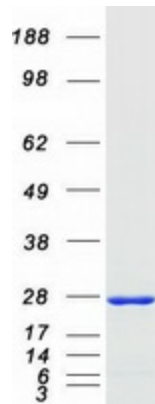
Synonyms: GIG4

Summary: This gene is a member of the Rab family of small G proteins and plays a role in regulating membrane trafficking between trans-Golgi network (TGN) and recycling endosomes (RE). The encoded protein is involved in the assembly of tight junctions, which are components of the apical junctional complex (AJC) of epithelial cells. The AJC plays a role in forming a barrier between luminal contents and the underlying tissue. Additional functions associated with the protein include endocytic recycling of occludin, regulation of epithelial cell scattering, neuronal regeneration and regulation of neurite outgrowth. Alternately spliced transcript variants have been observed for this gene. A pseudogene associated with this gene is located on chromosome 12. [provided by RefSeq, Jan 2013]

Protein Families: Druggable Genome

Protein Pathways: Tight junction

Product images:



Coomassie blue staining of purified RAB13 protein (Cat# [TP301555]). The protein was produced from HEK293T cells transfected with RAB13 cDNA clone (Cat# [RC201555]) using MegaTran 2.0 (Cat# [TT210002]).