

Product datasheet for **TP301552**

SH3 containing Grb 2 like 1 protein (SH3GL1) (NM_003025) Human Recombinant Protein

Product data:

Product Type: Recombinant Proteins

Description: Recombinant protein of human SH3-domain GRB2-like 1 (SH3GL1), 20 µg

Species: Human

Expression Host: HEK293T

**Expression cDNA Clone
or AA Sequence:** >RC201552 protein sequence
Red=Cloning site **Green**=Tags(s)

MSVAGLKKQFYKASQLVSEKVGGAEGTKLDDDFKEMEKKVDVTSKAVTEVLARTIEYLQPNPASRAKLTM
LNTVSKIRGQVKNPQSEGLLGECMIRHGKELGGESNFGDALLDAGESMKRLAEVKDSLIDIEVKQNF
DPLQNLCEKDLKEIQHHLKKLEGRRLDFDYKKKRQGGKIPDEELRQALEKFEESEVAETSMHNLLET
DIE QVSQLSALVDAQLDYHRQAVQILDELAEKLRMRREASSRPKREYKPKPREPFDLGEPEQSNGGFPCTTA
PKIAASSFRSSDKPIRTPSRSMPLDQPSCALYDFEPENDGELGFHEGDVITLTNQIDENWYEGMLDG
QSGFFPLSYVEVLVPLPQ

TRTRPLEQKLISEEDLAANDILDYKDDDDKV

Tag: C-Myc/DDK

Predicted MW: 41.3 kDa

Concentration: >0.05 µg/µL as determined by microplate BCA method

Purity: > 80% as determined by SDS-PAGE and Coomassie blue staining

Buffer: 25 mM Tris-HCl, 100 mM glycine, pH 7.3, 10% glycerol

Preparation: Recombinant protein was captured through anti-DDK affinity column followed by conventional chromatography steps.

Note: For testing in cell culture applications, please filter before use. Note that you may experience some loss of protein during the filtration process.

Storage: Store at -80°C.

Stability: Stable for 12 months from the date of receipt of the product under proper storage and handling conditions. Avoid repeated freeze-thaw cycles.

RefSeq: [NP_003016](#)

Locus ID: 6455



[View online »](#)

UniProt ID: [Q99961](#), [Q6FGM0](#)

RefSeq Size: 2559

Cytogenetics: 19p13.3

RefSeq ORF: 1104

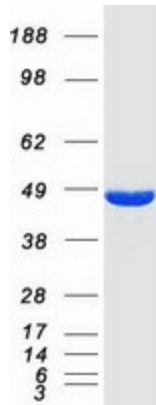
Synonyms: CNSA1; EEN; SH3D2B; SH3P8

Summary: This gene encodes a member of the endophilin family of Src homology 3 domain-containing proteins. The encoded protein is involved in endocytosis and may also play a role in the cell cycle. Overexpression of this gene may play a role in leukemogenesis, and the encoded protein has been implicated in acute myeloid leukemia as a fusion partner of the myeloid-lymphoid leukemia protein. Pseudogenes of this gene are located on the long arm of chromosomes 11 and 17. Alternatively spliced transcript variants encoding multiple isoforms have been observed for this gene. [provided by RefSeq, Jan 2011]

Protein Families: Druggable Genome

Protein Pathways: Endocytosis

Product images:



Coomassie blue staining of purified SH3GL1 protein (Cat# TP301552). The protein was produced from HEK293T cells transfected with SH3GL1 cDNA clone (Cat# [RC201552]) using MegaTran 2.0 (Cat# [TT210002]).