

## Product datasheet for **TP301547M**

### TPD52L2 (NM\_003288) Human Recombinant Protein

#### Product data:

Product Type:	Recombinant Proteins
Description:	Recombinant protein of human tumor protein D52-like 2 (TPD52L2), transcript variant 5, 100 µg
Species:	Human
Expression Host:	HEK293T
Expression cDNA Clone or AA Sequence:	>RC201547 protein sequence <b>Red</b> =Cloning site <b>Green</b> =Tags(s)

MDSAGQDINLNNSPNKGLLSDSMTDVPVDTGVAARTPAVEGLTEAAAAEELRAELTKVEEIVTLRQVLAAK  
ERHCHELKRRRLGLSTLGELKQNLRSWHDVQVSSAYVKTSEKLGWNEKVTQSDLYKKTQETLSQAGQKT  
SAALSTVGSASIRKLGDMRNSATFKSFEDRVGTIKSKVVGDRENGSDNLPSSAGSGDKPLSDPAPF

**TRTRPLEQKLISEEDLAANDILDYKDDDDKV**

Tag:	C-Myc/DDK
Predicted MW:	22.1 kDa
Concentration:	>0.05 µg/µL as determined by microplate BCA method
Purity:	> 80% as determined by SDS-PAGE and Coomassie blue staining
Buffer:	25 mM Tris-HCl, 100 mM glycine, pH 7.3, 10% glycerol
Preparation:	Recombinant protein was captured through anti-DDK affinity column followed by conventional chromatography steps.
Note:	For testing in cell culture applications, please filter before use. Note that you may experience some loss of protein during the filtration process.
Storage:	Store at -80°C.
Stability:	Stable for 12 months from the date of receipt of the product under proper storage and handling conditions. Avoid repeated freeze-thaw cycles.
RefSeq:	<a href="#">NP_003279</a>
Locus ID:	7165
UniProt ID:	<a href="#">O43399</a> , <a href="#">Q6FGS1</a>



[View online »](#)

RefSeq Size: 2359

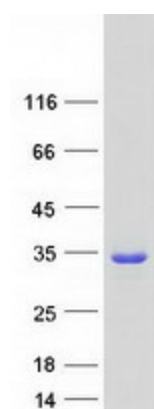
Cytogenetics: 20q13.33

RefSeq ORF: 618

Synonyms: D54; TPD54

**Summary:** This gene encodes a member of the tumor protein D52-like family. These proteins are characterized by an N-terminal coiled-coil motif that is used to form homo- and heteromeric complexes with other tumor protein D52-like proteins. Expression of this gene may be a marker for breast cancer and acute lymphoblastic leukemia. Alternatively spliced transcript variants encoding multiple isoforms have been observed for this gene, and a pseudogene of this gene is located on the long arm of chromosome 12. [provided by RefSeq, Aug 2011]

### Product images:



Coomassie blue staining of purified TPD52L2 protein (Cat# [TP301547]). The protein was produced from HEK293T cells transfected with TPD52L2 cDNA clone (Cat# [RC201547]) using MegaTran 2.0 (Cat# [TT210002]).