

## Product datasheet for **TP301547**

### TPD52L2 (NM\_003288) Human Recombinant Protein

#### Product data:

**Product Type:** Recombinant Proteins  
**Description:** Recombinant protein of human tumor protein D52-like 2 (TPD52L2), transcript variant 5, 20 µg  
**Species:** Human  
**Expression Host:** HEK293T  
**Expression cDNA Clone or AA Sequence:** >RC201547 protein sequence  
**Red**=Cloning site **Green**=Tags(s)

MDSAGQDINLNNSPNKGLLSDSMTDVPVDTGVAARTPAVEGLTEAAAAEELRAELTKVEEIVTLRQVLA  
AKERHCGELKRRRLGLSTLGELKQNLRSWHDVQVSSAYVKTEKLGWNEKVTQSDLYKKTQETLSQAGQKT  
SAALSTVGS AISRKLGD MRNSATFKSFEDRVGTIKSKVVG DRENGSDNLPSSAGSGDKPLSDPAPF

**TRTRPLEQKLISEEDLAANDILDYKDDDDKV**

**Tag:** C-Myc/DDK  
**Predicted MW:** 22.1 kDa  
**Concentration:** >0.05 µg/µL as determined by microplate BCA method  
**Purity:** > 80% as determined by SDS-PAGE and Coomassie blue staining  
**Buffer:** 25 mM Tris-HCl, 100 mM glycine, pH 7.3, 10% glycerol  
**Preparation:** Recombinant protein was captured through anti-DDK affinity column followed by conventional chromatography steps.  
**Note:** For testing in cell culture applications, please filter before use. Note that you may experience some loss of protein during the filtration process.  
**Storage:** Store at -80°C.  
**Stability:** Stable for 12 months from the date of receipt of the product under proper storage and handling conditions. Avoid repeated freeze-thaw cycles.  
**RefSeq:** [NP\\_003279](#)  
**Locus ID:** 7165  
**UniProt ID:** [O43399](#), [Q6FGS1](#)  
**RefSeq Size:** 2359



[View online »](#)

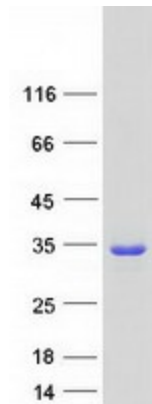
Cytogenetics: 20q13.33

RefSeq ORF: 618

Synonyms: D54; TPD54

**Summary:** This gene encodes a member of the tumor protein D52-like family. These proteins are characterized by an N-terminal coiled-coil motif that is used to form homo- and heteromeric complexes with other tumor protein D52-like proteins. Expression of this gene may be a marker for breast cancer and acute lymphoblastic leukemia. Alternatively spliced transcript variants encoding multiple isoforms have been observed for this gene, and a pseudogene of this gene is located on the long arm of chromosome 12. [provided by RefSeq, Aug 2011]

### Product images:



Coomassie blue staining of purified TPD52L2 protein (Cat# TP301547). The protein was produced from HEK293T cells transfected with TPD52L2 cDNA clone (Cat# [RC201547]) using MegaTran 2.0 (Cat# [TT210002]).