

## Product datasheet for **TP301533L**

### **S100P (NM\_005980) Human Recombinant Protein**

#### **Product data:**

<b>Product Type:</b>	Recombinant Proteins
<b>Description:</b>	Recombinant protein of human S100 calcium binding protein P (S100P), 1 mg
<b>Species:</b>	Human
<b>Expression Host:</b>	HEK293T
<b>Expression cDNA Clone or AA Sequence:</b>	>RC201533 protein sequence <b>Red</b> =Cloning site <b>Green</b> =Tags(s)  MTELETAMGMIIDVFSRYSGSEGSTQTLTKGELKVLMEKELPGFLQSGKDKDAVDKLLKDL DANGDAQVD FSEFIVFVA AITSACHKYFEKAGLK  <b>TRTRPLEQKLISEEDLAANDILDYKDDDDKV</b>
<b>Tag:</b>	C-Myc/DDK
<b>Predicted MW:</b>	10.2 kDa
<b>Concentration:</b>	>0.05 µg/µL as determined by microplate BCA method
<b>Purity:</b>	> 80% as determined by SDS-PAGE and Coomassie blue staining
<b>Buffer:</b>	25 mM Tris-HCl, 100 mM glycine, pH 7.3, 10% glycerol
<b>Preparation:</b>	Recombinant protein was captured through anti-DDK affinity column followed by conventional chromatography steps.
<b>Note:</b>	For testing in cell culture applications, please filter before use. Note that you may experience some loss of protein during the filtration process.
<b>Storage:</b>	Store at -80°C.
<b>Stability:</b>	Stable for 12 months from the date of receipt of the product under proper storage and handling conditions. Avoid repeated freeze-thaw cycles.
<b>RefSeq:</b>	<a href="#">NP_005971</a>
<b>Locus ID:</b>	6286
<b>UniProt ID:</b>	<a href="#">P25815</a>
<b>RefSeq Size:</b>	510
<b>Cytogenetics:</b>	4p16.1



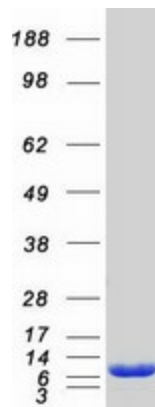
[View online »](#)

RefSeq ORF: 285

Synonyms: MIG9

**Summary:** The protein encoded by this gene is a member of the S100 family of proteins containing 2 EF-hand calcium-binding motifs. S100 proteins are localized in the cytoplasm and/or nucleus of a wide range of cells, and involved in the regulation of a number of cellular processes such as cell cycle progression and differentiation. S100 genes include at least 13 members which are located as a cluster on chromosome 1q21; however, this gene is located at 4p16. This protein, in addition to binding  $\text{Ca}^{2+}$ , also binds  $\text{Zn}^{2+}$  and  $\text{Mg}^{2+}$ . This protein may play a role in the etiology of prostate cancer. [provided by RefSeq, Jul 2008]

### Product images:



Coomassie blue staining of purified S100P protein (Cat# [TP301533]). The protein was produced from HEK293T cells transfected with S100P cDNA clone (Cat# [RC201533]) using MegaTran 2.0 (Cat# [TT210002]).