

## Product datasheet for **TP301529L**

### **PPIH (NM\_006347) Human Recombinant Protein**

#### **Product data:**

**Product Type:** Recombinant Proteins

**Description:** Recombinant protein of human peptidylprolyl isomerase H (cyclophilin H) (PPIH), 1 mg

**Species:** Human

**Expression Host:** HEK293T

**Expression cDNA Clone  
or AA Sequence:** >RC201529 protein sequence  
**Red**=Cloning site **Green**=Tags(s)

MAVANSSPVNPVFFDVSIGGQEVGRMKIELFADVVPKTAENFRQFCTGEFRKDGVPYIGYKGFHHRVIK  
DFMIQGGDFVNGDGTGVASIYRGPADENFKLRHSAPGLLSMANS GPSTNGCQFFITCSKCDWLDGKHW  
FGKIIDGLLVMRKIENVPTGPNNKPKLPVVISQCGEM

**TRTRPLEQKLISEEDLAANDILDYKDDDDKV**

**Tag:** C-Myc/DDK

**Predicted MW:** 19 kDa

**Concentration:** >0.05 µg/µL as determined by microplate BCA method

**Purity:** > 80% as determined by SDS-PAGE and Coomassie blue staining

**Buffer:** 25 mM Tris-HCl, 100 mM glycine, pH 7.3, 10% glycerol

**Preparation:** Recombinant protein was captured through anti-DDK affinity column followed by conventional chromatography steps.

**Note:** For testing in cell culture applications, please filter before use. Note that you may experience some loss of protein during the filtration process.

**Storage:** Store at -80°C.

**Stability:** Stable for 12 months from the date of receipt of the product under proper storage and handling conditions. Avoid repeated freeze-thaw cycles.

**RefSeq:** [NP\\_006338](#)

**Locus ID:** 10465

**UniProt ID:** [O43447](#), [Q6FH36](#)

**RefSeq Size:** 813



[View online »](#)

**Cytogenetics:** 1p34.2

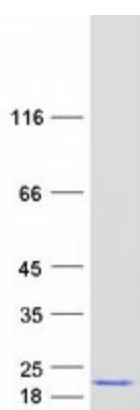
**RefSeq ORF:** 531

**Synonyms:** CYP-20; CYPH; SnuCyp-20; USA-CYP

**Summary:** The protein encoded by this gene is a member of the peptidyl-prolyl cis-trans isomerase (PPIase) family. PPIases catalyze the cis-trans isomerization of proline imidic peptide bonds in oligopeptides and accelerate the folding of proteins. This protein is a specific component of the complex that includes pre-mRNA processing factors PRPF3, PRPF4, and PRPF18, as well as U4/U5/U6 tri-snRNP. This protein has been shown to possess PPIase activity and may act as a protein chaperone that mediates the interactions between different proteins inside the spliceosome. [provided by RefSeq, Jul 2008]

**Protein Pathways:** Spliceosome

### Product images:



Coomassie blue staining of purified PPIH protein (Cat# [TP301529]). The protein was produced from HEK293T cells transfected with PPIH cDNA clone (Cat# [RC201529]) using MegaTran 2.0 (Cat# [TT210002]).