

## Product datasheet for TP301529

### PPIH (NM\_006347) Human Recombinant Protein

#### Product data:

Product Type:	Recombinant Proteins
Description:	Recombinant protein of human peptidylprolyl isomerase H (cyclophilin H) (PPIH), 20 µg
Species:	Human
Expression Host:	HEK293T
Expression cDNA Clone or AA Sequence:	>RC201529 protein sequence <b>Red</b> =Cloning site <b>Green</b> =Tags(s)
	MAVANSSPVNPVFFDVSIQGGQEVGRMKIELFADVVPKTAENFRQFCTGEFRKDGVPVIGYKGSTFHRVIK DFMIQGGDFVNGDGTGVASIYRGPFADENFKLRHSAPGLLSMANS GPSTNGCQFFITCSKCDWLDGKHWV FGKIIDGLLVMRKIENVPTGPNNKPKLPVVISQCGEM
	<b>TR</b> TRPLE <b>QKLISEEDLA</b> ANDILDYKDDDDKV
Tag:	C-Myc/DDK
Predicted MW:	19 kDa
Concentration:	>0.05 µg/µL as determined by microplate BCA method
Purity:	> 80% as determined by SDS-PAGE and Coomassie blue staining
Buffer:	25 mM Tris-HCl, 100 mM glycine, pH 7.3, 10% glycerol
Preparation:	Recombinant protein was captured through anti-DDK affinity column followed by conventional chromatography steps.
Note:	For testing in cell culture applications, please filter before use. Note that you may experience some loss of protein during the filtration process.
Storage:	Store at -80°C.
Stability:	Stable for 12 months from the date of receipt of the product under proper storage and handling conditions. Avoid repeated freeze-thaw cycles.
RefSeq:	<u>NP_006338</u>
Locus ID:	10465
UniProt ID:	<u>O43447</u> , <u>Q6FH36</u>
RefSeq Size:	813



[View online »](#)

**Cytogenetics:** 1p34.2

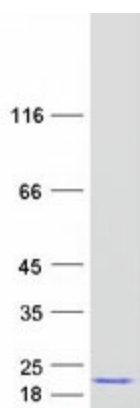
**RefSeq ORF:** 531

**Synonyms:** CYP-20; CYPH; SnuCyp-20; USA-CYP

**Summary:** The protein encoded by this gene is a member of the peptidyl-prolyl cis-trans isomerase (PPIase) family. PPIases catalyze the cis-trans isomerization of proline imidic peptide bonds in oligopeptides and accelerate the folding of proteins. This protein is a specific component of the complex that includes pre-mRNA processing factors PRPF3, PRPF4, and PRPF18, as well as U4/U5/U6 tri-snRNP. This protein has been shown to possess PPIase activity and may act as a protein chaperone that mediates the interactions between different proteins inside the spliceosome. [provided by RefSeq, Jul 2008]

**Protein Pathways:** Spliceosome

### Product images:



Coomassie blue staining of purified PPIH protein (Cat# TP301529). The protein was produced from HEK293T cells transfected with PPIH cDNA clone (Cat# [RC201529]) using MegaTran 2.0 (Cat# [TT210002]).