

Product datasheet for TP301524M

RALBP1 (NM_006788) Human Recombinant Protein

Product data:

Product Type:	Recombinant Proteins
Description:	Recombinant protein of human ralA binding protein 1 (RALBP1), 100 µg
Species:	Human
Expression Host:	HEK293T
Expression cDNA Clone or AA Sequence:	>RC201524 representing NM_006788 Red=Cloning site Green=Tags(s)

MTECFLPPTSSPSEHRRVEHGSLTRTPSSEEISPTKFPGLYRTGEPSPPHDILHEPPDWSDDEKDHGK
 KKGKFKKKEKRTEGYAAFQEDSSGDEAESPSKMKRSKGIHVFKKPSFSKKKEKDFKIKEKPKEEKHKEEK
 HKEEKHKEKSKDLTAADVVKQWKEKKKKKKPIQEPEVPQIDVPLNKPIFGIPLADAVERTMMYDGIPLP
 AVFRECIDYVEKYGKCEGIYRVSGIKSKVDELKAAVDREESTNLEDYEPNTVASLLKQYLRDLPENLLT
 KELMPRFEEACGRTTETEKVQEFQRLKELPECNYLLISWLIVHMDHVIAKELETKMNIQNISIVLSPTV
 QISNRVLYVFFTHVQELFGNVVLKQVMKPLRWSNMATMPTLPETQAGIKEIRREQEFLNCLHRDLQGGI
 KDLSKEERLWEVQRILTALKRKLREAKRQECETKIAQEIASLSKEDVSKEEMNENEEVINILLAQENEIL
 TEQEELLAMEQFLRRQIASEKEEIERLRAEIAEIQSRQQHGRSETEEYSSSESESESEDEEELQIILEDLQ
 RQNEELEIKNNHLNQAIIHEEREAIILRVQLRLLQMQRAKAEQQAQEQDEEPEWRGGAVQPPRDGVLEPKA
 AKEQPKAGKEPAKPSRDRKETS

TRTRPLEQKLISEEDLAANDILDYKDDDDKV

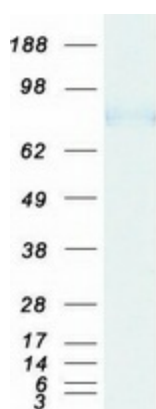
Tag:	C-Myc/DDK
Predicted MW:	75.9 kDa
Concentration:	>0.05 µg/µL as determined by microplate BCA method
Purity:	> 80% as determined by SDS-PAGE and Coomassie blue staining
Buffer:	25 mM Tris-HCl, 100 mM glycine, pH 7.3, 10% glycerol
Preparation:	Recombinant protein was captured through anti-DDK affinity column followed by conventional chromatography steps.
Note:	For testing in cell culture applications, please filter before use. Note that you may experience some loss of protein during the filtration process.
Storage:	Store at -80°C.



[View online »](#)

Stability:	Stable for 12 months from the date of receipt of the product under proper storage and handling conditions. Avoid repeated freeze-thaw cycles.
RefSeq:	NP_006779
Locus ID:	10928
UniProt ID:	Q15311
RefSeq Size:	4368
Cytogenetics:	18p11.22
RefSeq ORF:	1965
Synonyms:	RIP1; RLIP1; RLIP76
Summary:	RALBP1 plays a role in receptor-mediated endocytosis and is a downstream effector of the small GTP-binding protein RAL (see RALA; MIM 179550). Small G proteins, such as RAL, have GDP-bound inactive and GTP-bound active forms, which shift from the inactive to the active state through the action of RALGDS (MIM 601619), which in turn is activated by RAS (see HRAS; MIM 190020) (summary by Feig, 2003 [PubMed 12888294]).[supplied by OMIM, Nov 2010]
Protein Pathways:	Pancreatic cancer, Pathways in cancer

Product images:



Coomassie blue staining of purified RALBP1 protein (Cat# [TP301524]). The protein was produced from HEK293T cells transfected with RALBP1 cDNA clone (Cat# [RC201524]) using MegaTran 2.0 (Cat# [TT210002]).