

## Product datasheet for **TP301524**

### **RALBP1 (NM\_006788) Human Recombinant Protein**

#### Product data:

**Product Type:** Recombinant Proteins  
**Description:** Recombinant protein of human ralA binding protein 1 (RALBP1), 20 µg  
**Species:** Human  
**Expression Host:** HEK293T  
**Expression cDNA Clone or AA Sequence:** >RC201524 representing NM\_006788  
**Red**=Cloning site **Green**=Tags(s)

MTECFLPPTSSPSEHRRVEHGSLTRTPSSEEISPTKFPGLYRTGEPSPPHDILHEPPDWSDDEKDHGK  
KKGKFKKKEKRTEGYAAFQEDSSGDEAESPSKMKRSKGIHVFKKPSFSKKKEKDFKIKEKPKEEKHKEEK  
HKEEKHKEKSKDLTAADVVKQWKEKKKKKKPIQEPEVPQIDVPLKPIFGIPLADAVERTMMYDGIPLP  
AVFRECIDYVEKYGKCEGIYRVSGIKSKVDELKAAVDREESTNLEDYEPNTVASLLKQYLRDLPENLLT  
KELMPRFEEACGRRTTETEKVQEFQRLKELPECNYLLISWLIVHMDHVIAKELETKMNIQNISIVLSPTV  
QISNRVLYVFFTHVQELFGNVVLKQVMKPLRWSNMATMPTLPETQAGIKEIRREQEFLNCLHRDLQGGI  
KDLSKEERLWEVQRILTALKRKLREAKRQECETKIAQEIASLSKEDVSKEEMNENEEVINILLAQENEIL  
TEQEELLAMEQFLRRQIASEKEEIERLRAEIAEIQSRQQHGRSETEEYSSSESESESEDEEELQIILEDLQ  
RQNEELEIKNNHLNQAIIHEEREAIILRVQLRLLQMQRAKAEQQAQAEDEEPEWRGGAVQPPRDGVLEPKA  
AKEQPKAGKEPAKPSRDRKETS

**TRTRPLEQKLISEEDLAANDILDYKDDDDKV**

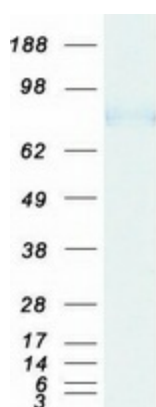
**Tag:** C-Myc/DDK  
**Predicted MW:** 75.9 kDa  
**Concentration:** >0.05 µg/µL as determined by microplate BCA method  
**Purity:** > 80% as determined by SDS-PAGE and Coomassie blue staining  
**Buffer:** 25 mM Tris-HCl, 100 mM glycine, pH 7.3, 10% glycerol  
**Preparation:** Recombinant protein was captured through anti-DDK affinity column followed by conventional chromatography steps.  
**Note:** For testing in cell culture applications, please filter before use. Note that you may experience some loss of protein during the filtration process.  
**Storage:** Store at -80°C.



[View online »](#)

<b>Stability:</b>	Stable for 12 months from the date of receipt of the product under proper storage and handling conditions. Avoid repeated freeze-thaw cycles.
<b>RefSeq:</b>	<a href="#">NP_006779</a>
<b>Locus ID:</b>	10928
<b>UniProt ID:</b>	<a href="#">Q15311</a>
<b>RefSeq Size:</b>	4368
<b>Cytogenetics:</b>	18p11.22
<b>RefSeq ORF:</b>	1965
<b>Synonyms:</b>	RIP1; RLIP1; RLIP76
<b>Summary:</b>	RALBP1 plays a role in receptor-mediated endocytosis and is a downstream effector of the small GTP-binding protein RAL (see RALA; MIM 179550). Small G proteins, such as RAL, have GDP-bound inactive and GTP-bound active forms, which shift from the inactive to the active state through the action of RALGDS (MIM 601619), which in turn is activated by RAS (see HRAS; MIM 190020) (summary by Feig, 2003 [PubMed 12888294]).[supplied by OMIM, Nov 2010]
<b>Protein Pathways:</b>	Pancreatic cancer, Pathways in cancer

### Product images:



Coomassie blue staining of purified RALBP1 protein (Cat# TP301524). The protein was produced from HEK293T cells transfected with RALBP1 cDNA clone (Cat# [RC201524]) using MegaTran 2.0 (Cat# [TT210002]).