

## Product datasheet for TP301521

### GLMN (NM\_053274) Human Recombinant Protein

#### Product data:

Product Type:	Recombinant Proteins
Description:	Recombinant protein of human glomulin, FKBP associated protein (GLMN), 20 µg
Species:	Human
Expression Host:	HEK293T
Expression cDNA Clone or AA Sequence:	>RC201521 protein sequence <b>Red</b> =Cloning site <b>Green</b> =Tags(s)

MAVEELQSIIRKRCQILEEQDFKEEDFGLFQLAGQRCIEEGHTDQLEIIQNEKNKVIKINMGWNLVGPVV  
RCLLCKDKEDSKRKVYFLIFDLLVKLCNPKELLLGLELIEEPSGKQISQSILLLLQPLQTVIQKLHNKA  
YSIGLALSTLWNQLSLLPVPYSKEQIQMDDYGLCQCKALIEFTKPFVVEVIDNKENSLNEKLDKDELLK  
FCFKSLKCPLLTAQFFEQSEEGNDPFRYFASEIIGFLSAIGHPPFKMIFNHGRKKRTWNYLEFEENEK  
QLADSMASLAYLVFVQGIHIDQLPMVLSPLYLLQFNMGHIEVFLQRTEESVISKGLELLENSLLRIEDNS  
LLYQYLEIKSFLTVPQGLVKVMTLCPIETLRKKS LAMLQLYINKLDSQGKYTLFRCLLNTSNHSGVEAFI  
IQNIKNQIDMSLKRTRNNKWFTGPQLISLLDLVFLPEGAETDLLQNSDRIMASLNLLRVLVIKDNENDN  
QTGLWTELGNIEENFLKPLHIGLNMSKAHYEAEIKNSQEAQKSKDLCSITVSGEEIPNMPPEMQLKVLHS  
ALFTFDLIESVLARVEELIEIKTKSTSEENIGIK

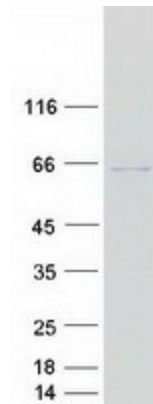
**TRTRPLEQKLISEEDLAANDILDYKDDDDKV**

Tag:	C-Myc/DDK
Predicted MW:	68 kDa
Concentration:	>0.05 µg/µL as determined by microplate BCA method
Purity:	> 80% as determined by SDS-PAGE and Coomassie blue staining
Buffer:	25 mM Tris-HCl, 100 mM glycine, pH 7.3, 10% glycerol
Preparation:	Recombinant protein was captured through anti-DDK affinity column followed by conventional chromatography steps.
Note:	For testing in cell culture applications, please filter before use. Note that you may experience some loss of protein during the filtration process.
Storage:	Store at -80°C.



[View online »](#)

<b>Stability:</b>	Stable for 12 months from the date of receipt of the product under proper storage and handling conditions. Avoid repeated freeze-thaw cycles.
<b>RefSeq:</b>	<a href="#">NP_444504</a>
<b>Locus ID:</b>	11146
<b>UniProt ID:</b>	<a href="#">Q92990</a>
<b>RefSeq Size:</b>	2042
<b>Cytogenetics:</b>	1p22.1
<b>RefSeq ORF:</b>	1782
<b>Synonyms:</b>	FAP; FAP48; FAP68; FKBPAP; GLML; GVM; VMGLOM
<b>Summary:</b>	This gene encodes a phosphorylated protein that is a member of a Skp1-Cullin-F-box-like complex. The protein is essential for normal development of the vasculature and mutations in this gene have been associated with glomuvenous malformations, also called glomangiomas. Multiple splice variants encoding different isoforms have been found for this gene. [provided by RefSeq, Feb 2016]
<b>Protein Families:</b>	Druggable Genome

**Product images:**

Coomassie blue staining of purified GLMN protein (Cat# TP301521). The protein was produced from HEK293T cells transfected with GLMN cDNA clone (Cat# [RC201521]) using MegaTran 2.0 (Cat# [TT210002]).