

## Product datasheet for **TP301515L**

### HP1 alpha (CBX5) (NM\_012117) Human Recombinant Protein

#### Product data:

**Product Type:** Recombinant Proteins  
**Description:** Recombinant protein of human chromobox homolog 5 (HP1 alpha homolog, Drosophila) (CBX5), transcript variant 3, 1 mg

**Species:** Human

**Expression Host:** HEK293T

**Expression cDNA Clone or AA Sequence:** >RC201515 protein sequence  
**Red**=Cloning site **Green**=Tags(s)

MGKKTkRTADSSSEDEEEYWEKVLDRRVVKGQVEYLLKWKGFSEEHNTWEPEKNLDCPELISEFMKKY  
KKMKEGENNKPRESSENKRKSNFNSADDIKSKKKREQSNDIARGFERGLEPEKIIGATDSCGDLMLMFLM  
KWKDTDEADLVLAKEANVKCPQIVIAFYEERLTWHAYPEDAENKEKETAKS

**TR**TRPLEQKLISEEDLAANDILDYKDDDDKV

**Tag:** C-Myc/DDK

**Predicted MW:** 22 kDa

**Concentration:** >0.05 µg/µL as determined by microplate BCA method

**Purity:** > 80% as determined by SDS-PAGE and Coomassie blue staining

**Buffer:** 25 mM Tris-HCl, 100 mM glycine, pH 7.3, 10% glycerol

**Preparation:** Recombinant protein was captured through anti-DDK affinity column followed by conventional chromatography steps.

**Note:** For testing in cell culture applications, please filter before use. Note that you may experience some loss of protein during the filtration process.

**Storage:** Store at -80°C.

**Stability:** Stable for 12 months from the date of receipt of the product under proper storage and handling conditions. Avoid repeated freeze-thaw cycles.

**RefSeq:** [NP\\_036249](#)

**Locus ID:** 23468

**UniProt ID:** [P45973](#), [V9HWG0](#)

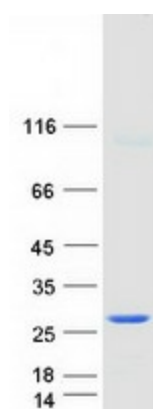


[View online »](#)

RefSeq Size:	11571
Cytogenetics:	12q13.13
RefSeq ORF:	573
Synonyms:	HEL25; HP1; HP1A

**Summary:** This gene encodes a highly conserved nonhistone protein, which is a member of the heterochromatin protein family. The protein is enriched in the heterochromatin and associated with centromeres. The protein has a single N-terminal chromodomain which can bind to histone proteins via methylated lysine residues, and a C-terminal chromo shadow-domain (CSD) which is responsible for the homodimerization and interaction with a number of chromatin-associated nonhistone proteins. The encoded product is involved in the formation of functional kinetochore through interaction with essential kinetochore proteins. The gene has a pseudogene located on chromosome 3. Multiple alternatively spliced variants, encoding the same protein, have been identified. [provided by RefSeq, Jul 2008]

### Product images:



Coomassie blue staining of purified CBX5 protein (Cat# [TP301515]). The protein was produced from HEK293T cells transfected with CBX5 cDNA clone (Cat# [RC201515]) using MegaTran 2.0 (Cat# [TT210002]).