

Product datasheet for **TP301514L**

Pallidin (BLOC1S6) (NM_012388) Human Recombinant Protein

Product data:

Product Type:	Recombinant Proteins
Description:	Recombinant protein of human pallidin homolog (mouse) (PLDN), 1 mg
Species:	Human
Expression Host:	HEK293T
Expression cDNA Clone or AA Sequence:	>RC201514 protein sequence Red =Cloning site Green =Tags(s)
	MSVPGPSSPDGALTRPPYCLEAGEPTPGLSDTSPDEGLIEDLTIEDKAVEQLAEGLLSHYLPDLQRSKQA LQELTQNQWLLDTLEQEISKFKCHECHSMLDINALFAEAKHYHAKLVNIRKEMLMMLHEKTSKLLKRALKLQ QKRQKEELEREQQREKEFEREKQLTARPAKRM
	TRTRPLEQKLISEEDLAANDILDYKDDDDKV
Tag:	C-Myc/DDK
Predicted MW:	19.6 kDa
Concentration:	>0.05 µg/µL as determined by microplate BCA method
Purity:	> 80% as determined by SDS-PAGE and Coomassie blue staining
Buffer:	25 mM Tris-HCl, 100 mM glycine, pH 7.3, 10% glycerol
Preparation:	Recombinant protein was captured through anti-DDK affinity column followed by conventional chromatography steps.
Note:	For testing in cell culture applications, please filter before use. Note that you may experience some loss of protein during the filtration process.
Storage:	Store at -80°C.
Stability:	Stable for 12 months from the date of receipt of the product under proper storage and handling conditions. Avoid repeated freeze-thaw cycles.
RefSeq:	NP_036520
Locus ID:	26258
UniProt ID:	Q9UL45 , B3KY40
RefSeq Size:	3959



[View online »](#)

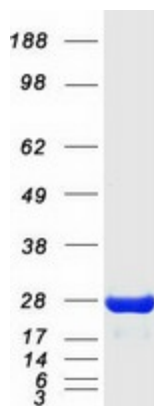
Cytogenetics: 15q21.1

RefSeq ORF: 516

Synonyms: BLOS6; HPS9; PA; PALLID; PLDN

Summary: The protein encoded by this gene may play a role in intracellular vesicle trafficking. It interacts with Syntaxin 13 which mediates intracellular membrane fusion. Mutations in this gene cause symptoms associated with Hermansky-Pudlak syndrome-9. Alternative splicing results in multiple transcript variants. A pseudogene related to this gene is located on the X chromosome. [provided by RefSeq, Aug 2015]

Product images:



Coomassie blue staining of purified BLOC1S6 protein (Cat# [TP301514]). The protein was produced from HEK293T cells transfected with BLOC1S6 cDNA clone (Cat# [RC201514]) using MegaTran 2.0 (Cat# [TT210002]).