

## Product datasheet for **TP301512L**

### SEC22L2 (SEC22A) (NM\_012430) Human Recombinant Protein

#### Product data:

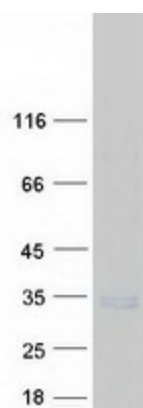
Product Type:	Recombinant Proteins
Description:	Recombinant protein of human SEC22 vesicle trafficking protein homolog A (S. cerevisiae) (SEC22A), 1 mg
Species:	Human
Expression Host:	HEK293T
Expression cDNA Clone or AA Sequence:	>Peptide sequence encoded by RC201512 <b>Blue</b> =ORF <b>Red</b> =Cloning site <b>Green</b> =Tag(s)
	<p>MSMILSASVIRVRDGLPLSASTDYEQSTGMQECRKFKMLSRKLAQLPDRCTLKTGHYNINFISLGVSYMMLCTENYPNVLAFLDELQKEFITTYNMMKTNTAVRPYCFIEFDNFIQRTKQRYNNPRSLSTKINLSDMQTEIKLRPPYQISMCELGSANGVTSAFSVDCKGAGKISSAHQRLEPATLSGIVGFILSLLCGALNLRGFGHAIESLLQSDGDDFNIIAFFLGTAAACYQCYLLVYYTGWRNVKSFLTFLGLICLCNMYLYELRNLWQLFFHVTVGAFVTLQIWLRLQAQGKAPDYDV</p> <p><b>TRTRPLEQKLISEEDLAANDILDYKDDDDKV</b></p>
	Recombinant protein using RC201512 also available, <a href="#">TP301512</a>
Tag:	C-Myc/DDK
Predicted MW:	34.8 kDa
Concentration:	>0.05 µg/µL as determined by microplate BCA method
Purity:	> 80% as determined by SDS-PAGE and Coomassie blue staining
Buffer:	25 mM Tris-HCl, 100 mM glycine, pH 7.3, 10% glycerol
Preparation:	Recombinant protein was captured through anti-DDK affinity column followed by conventional chromatography steps.
Note:	For testing in cell culture applications, please filter before use. Note that you may experience some loss of protein during the filtration process.
Storage:	Store at -80°C.
Stability:	Stable for 12 months from the date of receipt of the product under proper storage and handling conditions. Avoid repeated freeze-thaw cycles.
RefSeq:	<a href="#">NP_036562</a>



[View online »](#)

Locus ID:	26984
UniProt ID:	<a href="#">Q96IW7</a>
RefSeq Size:	3429
Cytogenetics:	3q21.1
RefSeq ORF:	921
Synonyms:	SEC22L2
Summary:	The protein encoded by this gene belongs to the member of the SEC22 family of vesicle trafficking proteins. This protein has similarity to rat SEC22 and may act in the early stages of the secretory pathway. [provided by RefSeq, Nov 2008]
Protein Families:	Transmembrane

### Product images:



Coomassie blue staining of purified SEC22A protein (Cat# [TP301512]). The protein was produced from HEK293T cells transfected with SEC22A cDNA clone (Cat# [RC201512]) using MegaTran 2.0 (Cat# [TT210002]).