

## Product datasheet for **TP301487**

### **MOBK1B (MOB1A) (NM\_018221) Human Recombinant Protein**

#### Product data:

**Product Type:** Recombinant Proteins

**Description:** Recombinant protein of human MOB1, Mps One Binder kinase activator-like 1B (yeast) (MOBK1B), 20 µg

**Species:** Human

**Expression Host:** HEK293T

**Expression cDNA Clone or AA Sequence:** >RC201487 representing NM\_018221  
**Red**=Cloning site **Green**=Tags(s)

MSFLFSSRSSKTFKPKKNIPEGSHQYELLKHAEATLGSGNLRQAVMLPEGEDLNEWIAVNTVDFFNQINM  
LYGTITEFCTEASCPVMSAGPRYEYHWADGTNIKKPIKCSAPKYIDYLMTWVQDQLDDETLFPSKIGVVPF  
PKNFMSVAKTILKRLFRVYAHYHQHFDSVMQLQEEAHLNTSFKHFIFFVQEFNLIDRRELAPLQELIEK  
LGSKDR

**TRTRPLEQKLISEEDLAANDILDYKDDDDKV**

**Tag:** C-Myc/DDK

**Predicted MW:** 24.9 kDa

**Concentration:** >0.05 µg/µL as determined by microplate BCA method

**Purity:** > 80% as determined by SDS-PAGE and Coomassie blue staining

**Buffer:** 25 mM Tris-HCl, 100 mM glycine, pH 7.3, 10% glycerol

**Preparation:** Recombinant protein was captured through anti-DDK affinity column followed by conventional chromatography steps.

**Note:** For testing in cell culture applications, please filter before use. Note that you may experience some loss of protein during the filtration process.

**Storage:** Store at -80°C.

**Stability:** Stable for 12 months from the date of receipt of the product under proper storage and handling conditions. Avoid repeated freeze-thaw cycles.

**RefSeq:** [NP\\_060691](#)

**Locus ID:** 55233



[View online »](#)

UniProt ID: [Q9H8S9](#)

RefSeq Size: 2543

Cytogenetics: 2p13.1

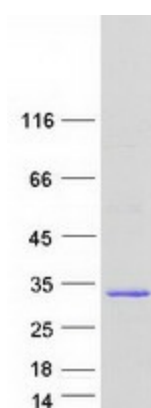
RefSeq ORF: 648

Synonyms: C2orf6; MATS1; MOB1; Mob4B; MOBK1B; MOBKL1B

**Summary:** The protein encoded by this gene is a component of the Hippo signaling pathway, which controls organ size and tumor growth by enhancing apoptosis. Loss of the encoded protein results in cell proliferation and cancer formation. The encoded protein is also involved in the control of microtubule stability during cytokinesis. Several transcript variants encoding different isoforms have been found for this gene. [provided by RefSeq, Nov 2015]

**Protein Families:** Druggable Genome

### Product images:



Coomassie blue staining of purified MOB1A protein (Cat# TP301487). The protein was produced from HEK293T cells transfected with MOB1A cDNA clone (Cat# [RC201487]) using MegaTran 2.0 (Cat# [TT210002]).