

Product datasheet for TP301486M

ERLEC1 (NM_015701) Human Recombinant Protein

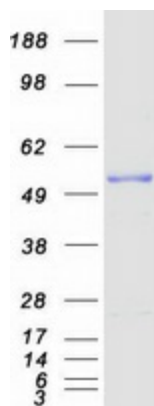
Product data:

| | |
|---------------------------------------|--|
| Product Type: | Recombinant Proteins |
| Description: | Recombinant protein of human chromosome 2 open reading frame 30 (C2orf30), transcript variant 1, 100 µg |
| Species: | Human |
| Expression Host: | HEK293T |
| Expression cDNA Clone or AA Sequence: | >RC201486 protein sequence Red =Cloning site Green =Tags(s) MEEGGGGVRSRLVPGGPVLLVLCGLLEASGGGRALPQLSDDIPFRVNWPWGTESLPTTGVLKYEDNYVIMT TAHKEYKCYLPLVTSGDEEEKDYKGNPRELLEPLFKQSSCSYRIESYWTYEVCHGKHIRQYHEEKET GQKINIHEYLGNMMLAKNLLFEKEREAEKEKSNEIPTKNIEGQMTPIYPVGMNGTPCSLKQNRPRSST VMYICHPEKHEILSVAEVTTCYEVVILTPLLCSHPKYRFRASPVNDIFCQSLPGSPFKPLTLRQLEQQ EEILRVFRRNKEEDLQSTKEERFPAIHKSIAIGSQPVLTVGTTTHISKLTDDQLIKEFLSGSYCFRGGVG WWKYFCYGKHVHQYHEDKDSGKTSVVVGTVNQEHEWAKKNTARAYHLQDDGTQTVRMVSHFYGN GDI CDITDKPRQVTVKLCKESDSPHAVTVYMLEPHSCQYILGVESPVICKILDTADENGLLSLPN TR TRPLE QKLISEEDLAANDILDYKDDDDKV |
| Tag: | C-Myc/DDK |
| Predicted MW: | 54.7 kDa |
| Concentration: | >0.05 µg/µL as determined by microplate BCA method |
| Purity: | > 80% as determined by SDS-PAGE and Coomassie blue staining |
| Buffer: | 25 mM Tris-HCl, 100 mM glycine, pH 7.3, 10% glycerol |
| Preparation: | Recombinant protein was captured through anti-DDK affinity column followed by conventional chromatography steps. |
| Note: | For testing in cell culture applications, please filter before use. Note that you may experience some loss of protein during the filtration process. |
| Storage: | Store at -80°C. |


[View online »](#)

| | |
|--------------------------|---|
| Stability: | Stable for 12 months from the date of receipt of the product under proper storage and handling conditions. Avoid repeated freeze-thaw cycles. |
| RefSeq: | NP_056516 |
| Locus ID: | 27248 |
| UniProt ID: | Q96DZ1 |
| RefSeq Size: | 2605 |
| Cytogenetics: | 2p16.2 |
| RefSeq ORF: | 1449 |
| Synonyms: | C2orf30; CIM; CL24936; CL25084; HEL117; XTP3-B; XTP3TPB |
| Summary: | This gene encodes a resident endoplasmic reticulum (ER) protein that functions in N-glycan recognition. This protein is thought to be involved in ER-associated degradation via its interaction with the membrane-associated ubiquitin ligase complex. It also functions as a regulator of multiple cellular stress-response pathways in a manner that promotes metastatic cell survival. Alternative splicing results in multiple transcript variants. A related pseudogene has been identified on chromosome 21. [provided by RefSeq, Aug 2011] |
| Protein Families: | Secreted Protein |

Product images:



Coomassie blue staining of purified ERLEC1 protein (Cat# [TP301486]). The protein was produced from HEK293T cells transfected with ERLEC1 cDNA clone (Cat# [RC201486]) using MegaTran 2.0 (Cat# [TT210002]).