

Product datasheet for TP301472M

SPCS1 (NM_014041) Human Recombinant Protein

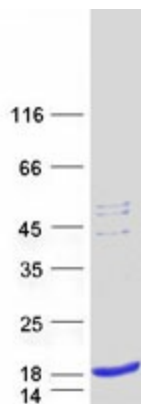
Product data:

| | |
|---------------------------------------|--|
| Product Type: | Recombinant Proteins |
| Description: | Recombinant protein of human signal peptidase complex subunit 1 homolog (S. cerevisiae) (SPCS1), 100 µg |
| Species: | Human |
| Expression Host: | HEK293T |
| Expression cDNA Clone or AA Sequence: | >RC201472 protein sequence Red =Cloning site Green =Tags(s) |
| | MLEHLSSLPTQMDYKGGQKLAEQMFQGIILFSAIVGFIYGYVAEQFGWTVYIVMAGFAFSCLAQLTLPPWP IYRRHPLKWLVPVQESSTDDKKPGERKIKRHAKNN TRTRPLEQKLISEEDLAANDILDYKDDDDKV |
| Tag: | C-Myc/DDK |
| Predicted MW: | 11.6 kDa |
| Concentration: | >0.05 µg/µL as determined by microplate BCA method |
| Purity: | > 80% as determined by SDS-PAGE and Coomassie blue staining |
| Buffer: | 25 mM Tris-HCl, 100 mM glycine, pH 7.3, 10% glycerol |
| Preparation: | Recombinant protein was captured through anti-DDK affinity column followed by conventional chromatography steps. |
| Note: | For testing in cell culture applications, please filter before use. Note that you may experience some loss of protein during the filtration process. |
| Storage: | Store at -80°C. |
| Stability: | Stable for 12 months from the date of receipt of the product under proper storage and handling conditions. Avoid repeated freeze-thaw cycles. |
| RefSeq: | NP_054760 |
| Locus ID: | 28972 |
| UniProt ID: | Q9Y6A9 |
| RefSeq Size: | 1100 |



[View online »](#)

| | |
|-------------------|---|
| Cytogenetics: | 3p21.1 |
| RefSeq ORF: | 312 |
| Synonyms: | HSPC033; SPC1; SPC12; YJR010C-A |
| Summary: | Component of the microsomal signal peptidase complex which removes signal peptides from nascent proteins as they are translocated into the lumen of the endoplasmic reticulum. [UniProtKB/Swiss-Prot Function] |
| Protein Families: | Protease, Transmembrane |

Product images:

Coomassie blue staining of purified SPCS1 protein (Cat# [TP301472]). The protein was produced from HEK293T cells transfected with SPCS1 cDNA clone (Cat# [RC201472]) using MegaTran 2.0 (Cat# [TT210002]).