

Product datasheet for TP301472L

SPCS1 (NM_014041) Human Recombinant Protein

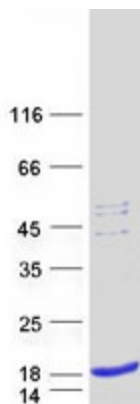
Product data:

Product Type:	Recombinant Proteins
Description:	Recombinant protein of human signal peptidase complex subunit 1 homolog (S. cerevisiae) (SPCS1), 1 mg
Species:	Human
Expression Host:	HEK293T
Expression cDNA Clone or AA Sequence:	>RC201472 protein sequence Red =Cloning site Green =Tags(s)
	 MLEHLSSLPTQMDYKGGQKLAEQMFQGIILFSAIVGFIYGYVAEQFGWTVYIVMAGFAFSCLAQLTLPPWP IYRRHPLKWLVPVQESSTDDKKPGERKIKRHAKNN TRTRPLEQKLISEEDLAANDILDYKDDDDKV
Tag:	C-Myc/DDK
Predicted MW:	11.6 kDa
Concentration:	>0.05 µg/µL as determined by microplate BCA method
Purity:	> 80% as determined by SDS-PAGE and Coomassie blue staining
Buffer:	25 mM Tris-HCl, 100 mM glycine, pH 7.3, 10% glycerol
Preparation:	Recombinant protein was captured through anti-DDK affinity column followed by conventional chromatography steps.
Note:	For testing in cell culture applications, please filter before use. Note that you may experience some loss of protein during the filtration process.
Storage:	Store at -80°C.
Stability:	Stable for 12 months from the date of receipt of the product under proper storage and handling conditions. Avoid repeated freeze-thaw cycles.
RefSeq:	NP_054760
Locus ID:	28972
UniProt ID:	Q9Y6A9
RefSeq Size:	1100



[View online »](#)

Cytogenetics:	3p21.1
RefSeq ORF:	312
Synonyms:	HSPC033; SPC1; SPC12; YJR010C-A
Summary:	Component of the microsomal signal peptidase complex which removes signal peptides from nascent proteins as they are translocated into the lumen of the endoplasmic reticulum. [UniProtKB/Swiss-Prot Function]
Protein Families:	Protease, Transmembrane

Product images:

Coomassie blue staining of purified SPCS1 protein (Cat# [TP301472]). The protein was produced from HEK293T cells transfected with SPCS1 cDNA clone (Cat# [RC201472]) using MegaTran 2.0 (Cat# [TT210002]).