

Product datasheet for **TP301461L**

BRP44L (MPC1) (NM_016098) Human Recombinant Protein

Product data:

Product Type: Recombinant Proteins

Description: Recombinant protein of human brain protein 44-like (BRP44L), 1 mg

Species: Human

Expression Host: HEK293T

Expression cDNA Clone or AA Sequence: >RC201461 protein sequence
Red=Cloning site **Green**=Tags(s)

MAGALVRKAADYVRSKDFRDYLMSTHFWGVPVANWGLPIAAINDMKKSPEIISGRMTFALCCYSLTFMRFA
YKVQPRNWLLFACHATNEVAQLIQGGRLIKHEMTKTASA

TRTRPLEQKLISEEDLAANDILDYKDDDDKV

Tag: C-Myc/DDK

Predicted MW: 12.2 kDa

Concentration: >0.05 µg/µL as determined by microplate BCA method

Purity: > 80% as determined by SDS-PAGE and Coomassie blue staining

Buffer: 25 mM Tris-HCl, 100 mM glycine, pH 7.3, 10% glycerol

Preparation: Recombinant protein was captured through anti-DDK affinity column followed by conventional chromatography steps.

Note: For testing in cell culture applications, please filter before use. Note that you may experience some loss of protein during the filtration process.

Storage: Store at -80°C.

Stability: Stable for 12 months from the date of receipt of the product under proper storage and handling conditions. Avoid repeated freeze-thaw cycles.

RefSeq: [NP_057182](#)

Locus ID: 51660

UniProt ID: [Q9Y5U8](#)

RefSeq Size: 977

Cytogenetics: 6q27



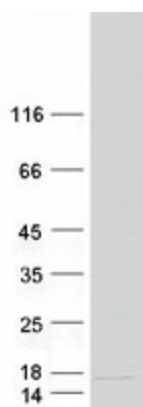
[View online »](#)

RefSeq ORF: 327

Synonyms: BRP44L; CGI-129; MPYCD; SLC54A1

Summary: The protein encoded by this gene is part of an MPC1/MPC2 heterodimer that is responsible for transporting pyruvate into mitochondria. The encoded protein is found in the inner mitochondrial membrane. Defects in this gene are a cause of mitochondrial pyruvate carrier deficiency. Several transcript variants, some protein coding and one non-protein coding, have been found for this gene. [provided by RefSeq, Aug 2012]

Product images:



Coomassie blue staining of purified MPC1 protein (Cat# [TP301461]). The protein was produced from HEK293T cells transfected with MPC1 cDNA clone (Cat# [RC201461]) using MegaTran 2.0 (Cat# [TT210002]).