

## Product datasheet for TP301456

### ILKAP (NM\_030768) Human Recombinant Protein

#### Product data:

Product Type:	Recombinant Proteins
Description:	Recombinant protein of human integrin-linked kinase-associated serine/threonine phosphatase 2C (ILKAP), 20 µg
Species:	Human
Expression Host:	HEK293T
Expression cDNA Clone or AA Sequence:	>RC201456 protein sequence Red=Cloning site Green=Tags(s)

MDLFGDLPEPERSPRPAAGKEAQKGPLLFDDLPPASSTDSGSGGPLLFDDLPPASSGDSGSLATSISQMV  
KTEGKGAKRKTSEEEKNGSEELVEKKVCKASSVIFGLKGYVAERKGEREEMQDAHVILNDITEECRPPSS  
LITRVSYFAVFDGHGGIRASKFAAQNLHQLIRKFKGDVISVEKTVKRCLLDTFKHTDEEFLKQASSQK  
PAWKDGGSTATCVLAVDNILYIANLGDSTRAILCRYNEESQKHAALSLSKEHNPTQYEERMRIQKAGGNVRD  
GRVLGVLEVSRSIGDGQYKRCGVTSVDPDIRRCQLTPNDRFILLACDGLFKVFTPEEAVNFILSCLEDEKI  
QTREGKSAADARYEAACNRLANKAVQRGSADNVTVMVVRIGH

TRTRPLEQKLISEEDLAANDILDYKDDDDKV

Tag:	C-Myc/DDK
Predicted MW:	42.7 kDa
Concentration:	>0.05 µg/µL as determined by microplate BCA method
Purity:	> 80% as determined by SDS-PAGE and Coomassie blue staining
Buffer:	25 mM Tris-HCl, 100 mM glycine, pH 7.3, 10% glycerol
Preparation:	Recombinant protein was captured through anti-DDK affinity column followed by conventional chromatography steps.
Note:	For testing in cell culture applications, please filter before use. Note that you may experience some loss of protein during the filtration process.
Storage:	Store at -80°C.
Stability:	Stable for 12 months from the date of receipt of the product under proper storage and handling conditions. Avoid repeated freeze-thaw cycles.
RefSeq:	<u><a href="#">NP_110395</a></u>



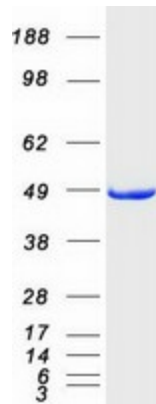
[View online »](#)

Locus ID: 80895  
UniProt ID: [Q9H0C8](#)  
RefSeq Size: 1480  
Cytogenetics: 2q37.3  
RefSeq ORF: 1176  
Synonyms: ILKAP2; ILKAP3; PP2C-DELTA; PP2CD; PPM1O

**Summary:** The protein encoded by this gene is a protein serine/threonine phosphatase of the PP2C family. This protein can interact with integrin-linked kinase (ILK/ILK1), a regulator of integrin mediated signaling, and regulate the kinase activity of ILK. Through the interaction with ILK, this protein may selectively affect the signaling process of ILK-mediated glycogen synthase kinase 3 beta (GSK3beta), and thus participate in Wnt signaling pathway. [provided by RefSeq, Jul 2008]

**Protein Families:** Druggable Genome, Phosphatase

### Product images:



Coomassie blue staining of purified ILKAP protein (Cat# TP301456). The protein was produced from HEK293T cells transfected with ILKAP cDNA clone (Cat# [RC201456]) using MegaTran 2.0 (Cat# [TT210002]).