

Product datasheet for TP301450L

SAR1 (SAR1A) (NM_020150) Human Recombinant Protein

Product data:

Product Type:	Recombinant Proteins
Description:	Recombinant protein of human SAR1 homolog A (<i>S. cerevisiae</i>) (SAR1A), transcript variant 2, 1 mg
Species:	Human
Expression Host:	HEK293T
Expression cDNA Clone or AA Sequence:	>RC201450 protein sequence Red=Cloning site Green=Tags(s)

MSFIFEWIYNGFSSVLQFLGLYKKSGLVFLGLDNAGKTTLLHMLKDDRLGQHVPTLHPTSEELTIAGMT
FTTFDLGGHEQARRVWKNYLPAINGIVFLVDCADHSRLVESKVELNALMTDETISNVPILILGNKIDRTD
AISEEKLREIFGLYGQTTGKGNVTLKELNARPMVEVFMCSVLKRQGYGEGFRWLSQYID

TRTRPLEQKLISEEDLAANDILDYKDDDDKV

Tag:	C-Myc/DDK
Predicted MW:	22.2 kDa
Concentration:	>0.05 µg/µL as determined by microplate BCA method
Purity:	> 80% as determined by SDS-PAGE and Coomassie blue staining
Buffer:	25 mM Tris-HCl, 100 mM glycine, pH 7.3, 10% glycerol
Preparation:	Recombinant protein was captured through anti-DDK affinity column followed by conventional chromatography steps.
Note:	For testing in cell culture applications, please filter before use. Note that you may experience some loss of protein during the filtration process.
Storage:	Store at -80°C.
Stability:	Stable for 12 months from the date of receipt of the product under proper storage and handling conditions. Avoid repeated freeze-thaw cycles.
RefSeq:	NP_064535
Locus ID:	56681
UniProt ID:	Q9NR31 , Q5SQT9



[View online »](#)

RefSeq Size: 3018

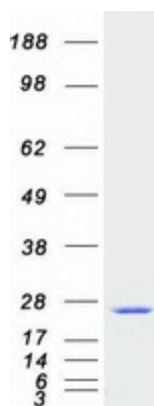
Cytogenetics: 10q22.1

RefSeq ORF: 594

Synonyms: masra2; SAR1; Sara; SARA1

Summary: Involved in transport from the endoplasmic reticulum to the Golgi apparatus (By similarity). Required to maintain SEC16A localization at discrete locations on the ER membrane perhaps by preventing its dissociation. SAR1A-GTP-dependent assembly of SEC16A on the ER membrane forms an organized scaffold defining endoplasmic reticulum exit sites (ERES). [UniProtKB/Swiss-Prot Function]

Product images:



Coomassie blue staining of purified SAR1A protein (Cat# [TP301450]). The protein was produced from HEK293T cells transfected with SAR1A cDNA clone (Cat# [RC201450]) using MegaTran 2.0 (Cat# [TT210002]).