

Product datasheet for **TP301447**

RILPL2 (NM_145058) Human Recombinant Protein

Product data:

Product Type: Recombinant Proteins

Description: Recombinant protein of human Rab interacting lysosomal protein-like 2 (RILPL2), 20 µg

Species: Human

Expression Host: HEK293T

**Expression cDNA Clone
or AA Sequence:** >RC201447 protein sequence
Red=Cloning site **Green**=Tags(s)

MEEPPVREEEEEEGEEDEERDEVGPEGALGKSPFQLTAEDVYDISYLLGRELMA LGSDPRVTQLQFKVVR
VLEMLEALVNEGLALEELKMERDHLRKEVEGLRRQSPASGEVNLGPNKMMVVDLTDPNRPRFTLQELRD
VLQERNKLKSQLLVVQEELQCYKSLIPPREGPGGRREKDAVWTSAKNAGRNKEEKTIKKLFFFRSGKQ
T

TRTRPLEQKLISEEDLAANDILDYKDDDDKV

Tag: C-Myc/DDK

Predicted MW: 23.8 kDa

Concentration: >0.05 µg/µL as determined by microplate BCA method

Purity: > 80% as determined by SDS-PAGE and Coomassie blue staining

Buffer: 25 mM Tris-HCl, 100 mM glycine, pH 7.3, 10% glycerol

Preparation: Recombinant protein was captured through anti-DDK affinity column followed by conventional chromatography steps.

Note: For testing in cell culture applications, please filter before use. Note that you may experience some loss of protein during the filtration process.

Storage: Store at -80°C.

Stability: Stable for 12 months from the date of receipt of the product under proper storage and handling conditions. Avoid repeated freeze-thaw cycles.

RefSeq: [NP_659495](#)

Locus ID: 196383

UniProt ID: [Q969X0](#)



[View online »](#)

RefSeq Size: 1435

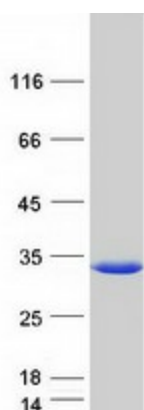
Cytogenetics: 12q24.31

RefSeq ORF: 633

Synonyms: RLP2

Summary: This gene encodes a protein that contains a rab-interacting lysosomal protein-like domain. This protein may be involved in regulating lysosome morphology. This protein may also be a target for the Hepatitis C virus and assist in viral replication. Alternate splicing results in multiple transcript variants. [provided by RefSeq, Jan 2015]

Product images:



Coomassie blue staining of purified RILPL2 protein (Cat# TP301447). The protein was produced from HEK293T cells transfected with RILPL2 cDNA clone (Cat# [RC201447]) using MegaTran 2.0 (Cat# [TT210002]).