

## Product datasheet for **TP301436**

### **RAB3C (NM\_138453) Human Recombinant Protein**

#### Product data:

Product Type:	Recombinant Proteins
Description:	Recombinant protein of human RAB3C, member RAS oncogene family (RAB3C), 20 µg
Species:	Human
Expression Host:	HEK293T
Expression cDNA Clone or AA Sequence:	>RC201436 protein sequence <b>Red</b> =Cloning site <b>Green</b> =Tags(s)
	 MRHEAPMQMASAQDARYGQKDSSDQNFYMFKLLIIGNSSVGKTSFLFRYADDSFTSAFVSTVGIDFKVK TVFKNEKRIKLQIWDTAGQERYRTITTAYYRGAMGFILMYDITNEESFNAVQDWSTQIKTYSWDNAQVIL VGNKCDMEDERVISTERGQHLGELGFEFFETSAKDNINVKQTFERLVDIICDKMSESLETDPAITAAKQ NTRLKETPPPPQPNCAC  <b>TRTRPLEQKLISEEDLAANDILDYKDDDDKV</b>
Tag:	C-Myc/DDK
Predicted MW:	25.8 kDa
Concentration:	>0.05 µg/µL as determined by microplate BCA method
Purity:	> 80% as determined by SDS-PAGE and Coomassie blue staining
Buffer:	25 mM Tris-HCl, 100 mM glycine, pH 7.3, 10% glycerol
Preparation:	Recombinant protein was captured through anti-DDK affinity column followed by conventional chromatography steps.
Note:	For testing in cell culture applications, please filter before use. Note that you may experience some loss of protein during the filtration process.
Storage:	Store at -80°C.
Stability:	Stable for 12 months from the date of receipt of the product under proper storage and handling conditions. Avoid repeated freeze-thaw cycles.
RefSeq:	<a href="#">NP_612462</a>
Locus ID:	115827
UniProt ID:	<a href="#">Q96E17</a>



[View online »](#)

RefSeq Size: 1030

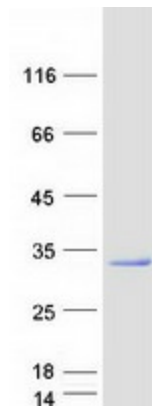
Cytogenetics: 5q11.2

RefSeq ORF: 681

**Summary:** This gene is a member of the RAS oncogene family and encodes a small GTPase. Other similar small GTPases are known to be involved in vesicle trafficking, and the encoded protein was shown to play a role in recycling phagocytosed MHC class 1 complexes to the cell surface. Two transcript variants encoding different isoforms have been found for this gene. [provided by RefSeq, Dec 2015]

**Protein Families:** Druggable Genome

### Product images:



Coomassie blue staining of purified RAB3C protein (Cat# TP301436). The protein was produced from HEK293T cells transfected with RAB3C cDNA clone (Cat# [RC201436]) using MegaTran 2.0 (Cat# [TT210002]).