

## Product datasheet for **TP301425**

### PSF3 (GINS3) (NM\_022770) Human Recombinant Protein

#### Product data:

Product Type:	Recombinant Proteins
Description:	Recombinant protein of human GINS complex subunit 3 (Psf3 homolog) (GINS3), transcript variant 2, 20 µg
Species:	Human
Expression Host:	HEK293T
Expression cDNA Clone or AA Sequence:	>RC201425 protein sequence <b>Red</b> =Cloning site <b>Green</b> =Tags(s)
	 MSEAYFRVESGALGPEENFLSLDDILMSHEKLPVRTETAMPRLGAFFLERSAGAETDNAVPQGSKLELPL WLAKGLFDNKRRILSVELPKIYQEGWRTVFSADPNVVDLHKMGPHFYGFGSQLLHFDSPENADISQSLQ TFIGRFRRIMDSSQNAYNEDTSALVARLDEMERGLFQTGQKGLNDFQCWEKGQASQITASNLVQNYKKRK FTDMED  <b>TRTRPLEQKLISEEDLAANDILDYKDDDDKV</b>
Tag:	C-Myc/DDK
Predicted MW:	24.4 kDa
Concentration:	>0.05 µg/µL as determined by microplate BCA method
Purity:	> 80% as determined by SDS-PAGE and Coomassie blue staining
Buffer:	25 mM Tris-HCl, 100 mM glycine, pH 7.3, 10% glycerol
Preparation:	Recombinant protein was captured through anti-DDK affinity column followed by conventional chromatography steps.
Note:	For testing in cell culture applications, please filter before use. Note that you may experience some loss of protein during the filtration process.
Storage:	Store at -80°C.
Stability:	Stable for 12 months from the date of receipt of the product under proper storage and handling conditions. Avoid repeated freeze-thaw cycles.
RefSeq:	<u><a href="#">NP_073607</a></u>
Locus ID:	64785



[View online »](#)

UniProt ID: [Q9BRX5](#), [A0A0S2Z5L0](#)

RefSeq Size: 2297

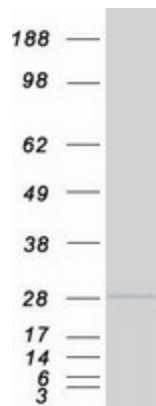
Cytogenetics: 16q21

RefSeq ORF: 648

Synonyms: PSF3

**Summary:** This gene encodes a protein subunit of the GINS heterotetrameric complex, which is essential for the initiation of DNA replication and replisome progression in eukaryotes. Alternatively spliced transcript variants encoding distinct isoforms have been described. [provided by RefSeq, Jul 2008]

### Product images:



Coomassie blue staining of purified GINS3 protein (Cat# TP301425). The protein was produced from HEK293T cells transfected with GINS3 cDNA clone (Cat# [RC201425]) using MegaTran 2.0 (Cat# [TT210002]).