

Product datasheet for **TP301417L**

PA1 (PAGR1) (NM_024516) Human Recombinant Protein

Product data:

| | |
|---------------------------------------|---|
| Product Type: | Recombinant Proteins |
| Description: | Recombinant protein of human chromosome 16 open reading frame 53 (C16orf53), 1 mg |
| Species: | Human |
| Expression Host: | HEK293T |
| Expression cDNA Clone or AA Sequence: | >RC201417 protein sequence Red =Cloning site Green =Tags(s) |

MSLARGHGDTAASTAAPLSEEGEVTSGLQALAVEDTGGPSASAGKAEDEGEGGREETEREGSGGEEAQGE
VPSAGGEEPAEEDSEDWCVPCSDDEEVELPADGQPWMPPPSEIQRLYELLAHGTLELQAEILPRRPPTPE
AQSEEEERSDEEPEAKEEEEEKPHMPTEFDDEPVTPKDSLIDRRRTPGSSARSQKREARLDKVLSDMKR
HKKLEEQILRTGRDLFSLDSEDPSPASPPLRSSGSSLFPRQRKY

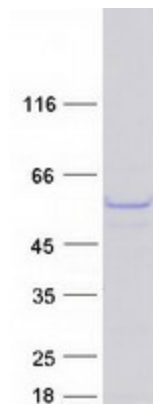
TRTRPLEQKLISEEDLAANDILDYKDDDDKV

| | |
|----------------|--|
| Tag: | C-Myc/DDK |
| Predicted MW: | 27.5 kDa |
| Concentration: | >0.05 µg/µL as determined by microplate BCA method |
| Purity: | > 80% as determined by SDS-PAGE and Coomassie blue staining |
| Buffer: | 25 mM Tris-HCl, 100 mM glycine, pH 7.3, 10% glycerol |
| Preparation: | Recombinant protein was captured through anti-DDK affinity column followed by conventional chromatography steps. |
| Note: | For testing in cell culture applications, please filter before use. Note that you may experience some loss of protein during the filtration process. |
| Storage: | Store at -80°C. |
| Stability: | Stable for 12 months from the date of receipt of the product under proper storage and handling conditions. Avoid repeated freeze-thaw cycles. |
| RefSeq: | NP_078792 |
| Locus ID: | 79447 |
| UniProt ID: | Q9BTK6 |



[View online »](#)

| | |
|---------------|---|
| RefSeq Size: | 3843 |
| Cytogenetics: | 16p11.2 |
| RefSeq ORF: | 762 |
| Synonyms: | C16orf53; GAS; PA1 |
| Summary: | C16ORF53 (PA1) is a component of a Set1-like multiprotein histone methyltransferase complex (Cho et al., 2007 [PubMed 17500065]).[supplied by OMIM, May 2008] |

Product images:

Coomassie blue staining of purified PAGR1 protein (Cat# [TP301417]). The protein was produced from HEK293T cells transfected with PAGR1 cDNA clone (Cat# [RC201417]) using MegaTran 2.0 (Cat# [TT210002]).