

Product datasheet for **TP301415L**

NPDC1 (NM_015392) Human Recombinant Protein

Product data:

Product Type:	Recombinant Proteins
Description:	Recombinant protein of human neural proliferation, differentiation and control, 1 (NPDC1), 1 mg
Species:	Human
Expression Host:	HEK293T
Expression cDNA Clone or AA Sequence:	>RC201415 protein sequence Red =Cloning site Green =Tags(s)

MATPLPPSPRHLRLLRLLSGLVLGAALRGAAAGHPDVAACPGSLDCALKRRARCPPGAHACGPCLQPF
QEDQQGLCVPRMRRPPGGGRPQPRLEDEIDFLAQELARKESGHSTPPLPKDRQLPEPATLGFSARGQGL
ELGLPSTPGTPTPTHTSLGSPVSSDPVHMSPLEPRGGQGDGLALVLILAFVAGAAALSVASLCWCRLQ
REIRLTQKADYATAKAPGSPAAPRISPGDQRLAQAEMYHYQHQRQQMLCLERHKEPPKELDTASSDEEN
EDGDFTVYECPLAPTGEMEVNRNPLFDHAALSAPLPAPSSPPALP

TRTRPLEQKLISEEDLAANDILDYKDDDDKV

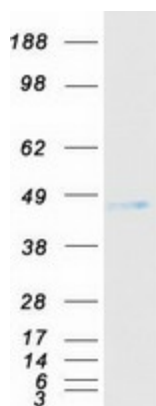
Tag:	C-Myc/DDK
Predicted MW:	34.3 kDa
Concentration:	>0.05 µg/µL as determined by microplate BCA method
Purity:	> 80% as determined by SDS-PAGE and Coomassie blue staining
Buffer:	25 mM Tris-HCl, 100 mM glycine, pH 7.3, 10% glycerol
Preparation:	Recombinant protein was captured through anti-DDK affinity column followed by conventional chromatography steps.
Note:	For testing in cell culture applications, please filter before use. Note that you may experience some loss of protein during the filtration process.
Storage:	Store at -80°C.
Stability:	Stable for 12 months from the date of receipt of the product under proper storage and handling conditions. Avoid repeated freeze-thaw cycles.
RefSeq:	NP_056207
Locus ID:	56654



[View online »](#)

UniProt ID:	<u>Q9NQX5</u>
RefSeq Size:	1548
Cytogenetics:	9q34.3
RefSeq ORF:	975
Synonyms:	CAB; CAB-; CAB-1; CAB1; NPDC-1
Summary:	Suppresses oncogenic transformation in neural and non-neural cells and down-regulates neural cell proliferation. Might be involved in transcriptional regulation (By similarity). [UniProtKB/Swiss-Prot Function]
Protein Families:	Transmembrane

Product images:



Coomassie blue staining of purified NPDC1 protein (Cat# [TP301415]). The protein was produced from HEK293T cells transfected with NPDC1 cDNA clone (Cat# [RC201415]) using MegaTran 2.0 (Cat# [TT210002]).