

Product datasheet for **TP301414**

FCRLM1 (FCRLA) (NM_032738) Human Recombinant Protein

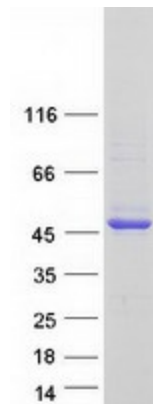
Product data:

Product Type:	Recombinant Proteins
Description:	Recombinant protein of human Fc receptor-like A (FCRLA), 20 µg
Species:	Human
Expression Host:	HEK293T
Expression cDNA Clone or AA Sequence:	>RC201414 protein sequence Red =Cloning site Green =Tags(s)
	<p>MLKKISVGVAGDLNVTMKGCVLMAWALYLSLGLVWVAQMLLAASFETLQCEGPVCTEESSCHTEDDLT DAREAGFQVKAYTFSEPFHLIVSYDWLILQGPAKPVFEGDLLVLRCAWQDWPLTQVTFYRDGSALGPPG PNREFSITVVQKADSGHYHCSGIFQSPGPGIPETASVVAITVQELFPAPILRAVPSAEPQAGSPMTLSCQ TKLPLQRSAAARLLFSFYKGRIVQSRGLSSEFQIPTASEDHSGSYWCEATEDNQVWKQSPQLEIRVQGA SSSAAPPTLNPAPQKSAAPGTAPEEAPGPLPPPPTPSSDPGFSSPLGMPDPHLYHQMGLLLKHMQDVRV LLGHLLMELRELSGHQKPGTTKATAE</p> <p>TRTRPLEQKLISEEDLAANDILDYKDDDDKV</p>
Tag:	C-Myc/DDK
Predicted MW:	40.5 kDa
Concentration:	>0.05 µg/µL as determined by microplate BCA method
Purity:	> 80% as determined by SDS-PAGE and Coomassie blue staining
Buffer:	25 mM Tris-HCl, 100 mM glycine, pH 7.3, 10% glycerol
Preparation:	Recombinant protein was captured through anti-DDK affinity column followed by conventional chromatography steps.
Note:	For testing in cell culture applications, please filter before use. Note that you may experience some loss of protein during the filtration process.
Storage:	Store at -80°C.
Stability:	Stable for 12 months from the date of receipt of the product under proper storage and handling conditions. Avoid repeated freeze-thaw cycles.
RefSeq:	NP_116127
Locus ID:	84824



[View online »](#)

UniProt ID:	<u>Q7L513, Q6MZF2</u>
RefSeq Size:	2357
Cytogenetics:	1q23.3
RefSeq ORF:	1128
Synonyms:	FCRL; FCRL1; FCRLb; FCRLc1; FCRLc2; FCRLd; FCRLe; FCRLM1; FCRLX; FCRX; FREB
Summary:	This gene encodes a protein similar to receptors for the Fc fragment of gamma immunoglobulin (IgG). These receptors, referred to as FCGRs, mediate the destruction of IgG-coated antigens and of cells induced by antibodies. This encoded protein is selectively expressed in B cells, and may be involved in their development. This protein may also be involved in the development of lymphomas. Multiple alternatively spliced transcript variants that encode different protein isoforms have been described for this gene. [provided by RefSeq, Aug 2011]
Protein Families:	Secreted Protein, Transmembrane

Product images:

Coomassie blue staining of purified FCRLA protein (Cat# TP301414). The protein was produced from HEK293T cells transfected with FCRLA cDNA clone (Cat# [RC201414]) using MegaTran 2.0 (Cat# [TT210002]).