

## Product datasheet for **TP301409L**

### RITA (RITA1) (NM\_032848) Human Recombinant Protein

#### Product data:

Product Type:	Recombinant Proteins
Description:	Recombinant protein of human chromosome 12 open reading frame 52 (C12orf52), 1 mg
Species:	Human
Expression Host:	HEK293T
Expression cDNA Clone or AA Sequence:	>RC201409 representing NM_032848 <b>Red</b> =Cloning site <b>Green</b> =Tags(s)
	 MKTPVELAVSGMQTLGLQHRCRGGYRVKARTSYVDETLFGSPAGTRPTPPDFDPPWVEKANRTRGVGKEA SKALGAKGSCETTPSRGSTPTLTPRKKNKYRPISHTPSYCDSESLFGSRSEGASFGAPRMAKGDAAKLRAL LWTPPPTPRGSHSPRPREAPLRAIHPAGPSKTEPGAADSQKLSMGGHLHSSRPLKRGLSHSLTHLNPST GHPATSAPHTNGPQDLRPSTSGVTFRSPLVTSRARSVSISVPSTPRRGGATQKPKPPWK  <b>TRTRPLEQKLISEEDLAANDILDYKDDDDKV</b>
Tag:	C-Myc/DDK
Predicted MW:	28.4 kDa
Concentration:	>0.05 µg/µL as determined by microplate BCA method
Purity:	> 80% as determined by SDS-PAGE and Coomassie blue staining
Buffer:	25 mM Tris-HCl, 100 mM glycine, pH 7.3, 10% glycerol
Preparation:	Recombinant protein was captured through anti-DDK affinity column followed by conventional chromatography steps.
Note:	For testing in cell culture applications, please filter before use. Note that you may experience some loss of protein during the filtration process.
Storage:	Store at -80°C.
Stability:	Stable for 12 months from the date of receipt of the product under proper storage and handling conditions. Avoid repeated freeze-thaw cycles.
RefSeq:	<a href="#">NP_116237</a>
Locus ID:	84934
UniProt ID:	<a href="#">Q96K30</a>



[View online »](#)

RefSeq Size: 1775

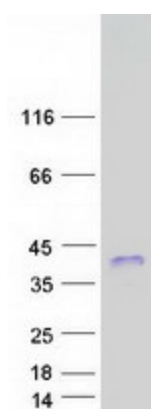
Cytogenetics: 12q24.13

RefSeq ORF: 807

Synonyms: C12orf52; RITA

**Summary:** Tubulin-binding protein that acts as a negative regulator of Notch signaling pathway. Shuttles between the cytoplasm and the nucleus and mediates the nuclear export of RBPJ/RBPSUH, thereby preventing the interaction between RBPJ/RBPSUH and NICD product of Notch proteins (Notch intracellular domain), leading to down-regulate Notch-mediated transcription. May play a role in neurogenesis.[UniProtKB/Swiss-Prot Function]

### Product images:



Coomassie blue staining of purified RITA1 protein (Cat# [TP301409]). The protein was produced from HEK293T cells transfected with RITA1 cDNA clone (Cat# [RC201409]) using MegaTran 2.0 (Cat# [TT210002]).