

## Product datasheet for TP301404L

### DIS3L (NM\_133375) Human Recombinant Protein

#### Product data:

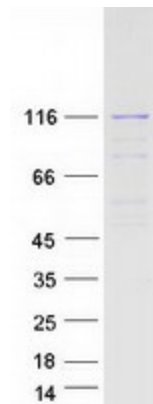
<b>Product Type:</b>	Recombinant Proteins
<b>Description:</b>	Recombinant protein of human DIS3 mitotic control homolog ( <i>S. cerevisiae</i> )-like (DIS3L), transcript variant 2, 1 mg
<b>Species:</b>	Human
<b>Expression Host:</b>	HEK293T
<b>Expression cDNA Clone or AA Sequence:</b>	>RC201404 protein sequence <b>Red</b> =Cloning site <b>Green</b> =Tags(s)
	<p>MQTACQAVQHQRGRRQYNKLRNLLK DARHDCILFANEFQCCYLPRERGESMEKWQTRSIYNAAVWYYHH  CQDRMPIVMVTEDDEAIQYQYGETEGVFVITFKNYLDNFWPDLKAAHELCDLSILQSRRENERESQESHGK  EYPEHLPLEVLEAGIKSGRYIQGILNVNKHRAQIEAFVRLQGASSKDSLVSILIHGMKARNRSIHGDV  VVPELLPKNEWKGRVALCENDCDDKASGESPSEMPMTGRVVGILQKNWRDYVVTFPSKEEVQSQGKNAQ  KILVTPWDYRIPKIRISTQQAETLQDFRVVVRIDSWESTSVYPNGHFVRVLGRIGDLEGEIATILVENS  SVIPFSEAMCEMPVNTPEPWWKVSPEEEQKRKDLRKSHLVFSIDPKGCEDVDDTLVSRTLNNGNLELGV  HIADVTHFVAPNSYIDIEARTRATYYLADRRYDMLPSVLSADLCSLLGGVDRYAVSIMWELDKASYEIK  KVWYGRTIIRSAYKLFYEAQAQLLDGNLSVDDIPEFKDLDEKSRQAKLEELVWAIGKLTDIARHVRRAK  DGCGALELEGVEVCVQLDDKKNHDLIPKQPLEVHETVAECMILANHWVAKKIWESFPHQALLRQHPPPH  QEFFSELRECAKAKGFFIDTRSNTLADSLDNANDPHDPVNRLLRSMATQAMSNALYFSTGSCAEEEFH  HYGLALDKYTHFTSPIRRYSIDIVHRLLMAAISKDKKMEIKGNLFSNKDLEELCRHINNRNQAQHSQKQ  STELFQCMYFKDKDPATEERCISDGVYISIRTNGVLLFIPRFGIKGAAYLKNKDGLVISC GPDSCSEWKP  GSLQRFQNKITSTTTDGESVTFHLLFDHVTVRISIQASRCHSDTIRLEIISNKPKIPNTELIHQSSPLLK  SELVKEVTKSVEEAQLAQEVKVNIIQEEYQEYRQTKGRSLYTLLEEIRD LALLDVSNNYGI</p> <p><b>TRTRPLEQKLISEEDLAANDILDYKDDDDKV</b></p>
<b>Tag:</b>	C-Myc/DDK
<b>Predicted MW:</b>	110.9 kDa
<b>Concentration:</b>	>0.05 µg/µL as determined by microplate BCA method
<b>Purity:</b>	> 80% as determined by SDS-PAGE and Coomassie blue staining
<b>Buffer:</b>	25 mM Tris-HCl, 100 mM glycine, pH 7.3, 10% glycerol



[View online »](#)

<b>Preparation:</b>	Recombinant protein was captured through anti-DDK affinity column followed by conventional chromatography steps.
<b>Note:</b>	For testing in cell culture applications, please filter before use. Note that you may experience some loss of protein during the filtration process.
<b>Storage:</b>	Store at -80°C.
<b>Stability:</b>	Stable for 12 months from the date of receipt of the product under proper storage and handling conditions. Avoid repeated freeze-thaw cycles.
<b>RefSeq:</b>	<a href="#">NP_588616</a>
<b>Locus ID:</b>	115752
<b>UniProt ID:</b>	<a href="#">Q8TF46</a>
<b>RefSeq Size:</b>	3714
<b>Cytogenetics:</b>	15q22.31
<b>RefSeq ORF:</b>	2913
<b>Synonyms:</b>	DIS3L1
<b>Summary:</b>	The cytoplasmic RNA exosome complex degrades unstable mRNAs and is involved in the regular turnover of other mRNAs. The protein encoded by this gene contains 3'-5' exoribonuclease activity and is a catalytic component of this complex. [provided by RefSeq, May 2016]

### Product images:



Coomassie blue staining of purified DIS3L protein (Cat# [TP301404]). The protein was produced from HEK293T cells transfected with DIS3L cDNA clone (Cat# [RC201404]) using MegaTran 2.0 (Cat# [TT210002]).