

## Product datasheet for **TP301388**

### ELAC1 (NM\_018696) Human Recombinant Protein

#### Product data:

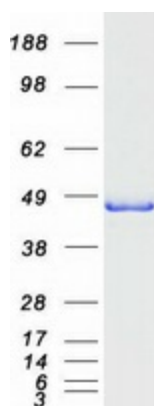
Product Type:	Recombinant Proteins
Description:	Recombinant protein of human elac homolog 1 (E. coli) (ELAC1), 20 µg
Species:	Human
Expression Host:	HEK293T
Expression cDNA Clone or AA Sequence:	>RC201388 protein sequence <b>Red</b> =Cloning site <b>Green</b> =Tags(s)
	MSMDVTFLGTGAAYSPSTRGASAVLRCEGECWLFDCGEGTQTQLMKSQLKAGRITKIFITHLHGDHFFG LPGLLCTISLQSGSMVSKQPIEIYGPVGLRDFIWRTMELSHTELVFHYVWHELVPADQCPAEELKEFAH VNRADSPPKKEEQGRTILLDSEENSYPQLFDDEQFVVKAFRLFHRIPSGFVSVEKKRPGKLNQKLKDLGV PPGPAYGKLKNGISVLENGVTISPQDVLKKPIVGRKICILGDCSGVVGDDGGVKKLCEADLLIHEATLDD AQMDKAKEHGHSTPQMAATFAKLCRAKRLVLTHFSQRYKPVALAREGETDGAIELKKQAESVLDLQEVTL AEDFMVISIPIKK
	<b>TRTRPLEQKLISEEDLAANDILDYKDDDDKV</b>
Tag:	C-Myc/DDK
Predicted MW:	39.8 kDa
Concentration:	>0.05 µg/µL as determined by microplate BCA method
Purity:	> 80% as determined by SDS-PAGE and Coomassie blue staining
Buffer:	25 mM Tris-HCl, 100 mM glycine, pH 7.3, 10% glycerol
Preparation:	Recombinant protein was captured through anti-DDK affinity column followed by conventional chromatography steps.
Note:	For testing in cell culture applications, please filter before use. Note that you may experience some loss of protein during the filtration process.
Storage:	Store at -80°C.
Stability:	Stable for 12 months from the date of receipt of the product under proper storage and handling conditions. Avoid repeated freeze-thaw cycles.
RefSeq:	<u><a href="#">NP_061166</a></u>
Locus ID:	55520



[View online »](#)

UniProt ID:	<u>Q9H777</u>
RefSeq Size:	2233
Cytogenetics:	18q21.2
RefSeq ORF:	1089
Synonyms:	D29
Summary:	Zinc phosphodiesterase, which displays some tRNA 3'-processing endonuclease activity. Probably involved in tRNA maturation, by removing a 3'-trailer from precursor tRNA. [UniProtKB/Swiss-Prot Function]

### Product images:



Coomassie blue staining of purified ELAC1 protein (Cat# TP301388). The protein was produced from HEK293T cells transfected with ELAC1 cDNA clone (Cat# [RC201388]) using MegaTran 2.0 (Cat# [TT210002]).