

Product datasheet for **TP301359**

SCGN (NM_006998) Human Recombinant Protein

Product data:

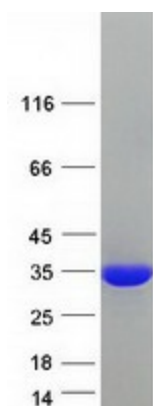
Product Type:	Recombinant Proteins
Description:	Purified recombinant protein of Homo sapiens secretagoin, EF-hand calcium binding protein (SCGN), 20 µg
Species:	Human
Expression Host:	HEK293T
Expression cDNA Clone or AA Sequence:	>RC201359 representing NM_006998 Red =Cloning site Green =Tags(s)
	<p>MDSREPTLGRLEAAGFWQVWQRFDADEKGYIEEKELDAFFLHMLMKLGTDDTVMKANLHKVKQQFMTTQ DASKDGRIRMKELAGMFLSEDEFLLFRRENPLDSSVEFMQIWRKYDADSSGFISAAELRNFLRDLFLH HKKAISEAKLEEYTGTMKIFDRNKDGRDLNLDLARILALQENFLLQFKMDACSTEERKRDFEKIFAYYD VSKTGALEGPEVDGFVKDMMELVQPSISGVDLDFREILLRHCDVKNKDGKIQKSELALCLGLKINP</p> <p>TRTRPLEQKLISEEDLAANDILDYKDDDDKV</p>
Tag:	C-Myc/DDK
Predicted MW:	31.9 kDa
Concentration:	>0.05 µg/µL as determined by microplate BCA method
Purity:	> 80% as determined by SDS-PAGE and Coomassie blue staining
Buffer:	25 mM Tris-HCl, 100 mM glycine, pH 7.3, 10% glycerol
Preparation:	Recombinant protein was captured through anti-DDK affinity column followed by conventional chromatography steps.
Note:	For testing in cell culture applications, please filter before use. Note that you may experience some loss of protein during the filtration process.
Storage:	Store at -80°C.
Stability:	Stable for 12 months from the date of receipt of the product under proper storage and handling conditions. Avoid repeated freeze-thaw cycles.
RefSeq:	<u>NP_008929</u>
Locus ID:	10590



[View online »](#)

UniProt ID:	Q76038
RefSeq Size:	1492
Cytogenetics:	6p22.2
RefSeq ORF:	828
Synonyms:	CALBL; DJ501N12.8; SECRET; SEGN; setagin
Summary:	The encoded protein is a secreted calcium-binding protein which is found in the cytoplasm. It is related to calbindin D-28K and calretinin. This protein is thought to be involved in KCL-stimulated calcium flux and cell proliferation. [provided by RefSeq, Jul 2008]

Product images:



Coomassie blue staining of purified SCGN protein (Cat# TP301359). The protein was produced from HEK293T cells transfected with SCGN cDNA clone (Cat# [RC201359]) using MegaTran 2.0 (Cat# [TT210002]).