

Product datasheet for **TP301358L**

Calbindin (CALB1) (NM_004929) Human Recombinant Protein

Product data:

Product Type:	Recombinant Proteins
Description:	Recombinant protein of human calbindin 1, 28kDa (CALB1), 1 mg
Species:	Human
Expression Host:	HEK293T
Expression cDNA Clone or AA Sequence:	>RC201358 protein sequence Red =Cloning site Green =Tags(s)

MAESHLQSSLITASQFFEIWLHFDADGSGYLEGKELQNLIQELQQARKKAGLELSPEMKTFFVDQYGQRDD
GKIGIVELAHVLPTEENFLLLFRCQQLKSCEEFMKTWRKYDTHSGFIETEELKNFLKDLLEKANKTVDD
TKLAEYTDLMLKLFDSNNDGKLELTEMARLLPVQENFLLKFQGIKMCGKEFNKAFELYDQDGNGYIDENE
LDALLKDLCEKNKQDLINNITTYKKNIMALSDGGKLYRTDLALILCAGDN

TRTRPLEQKLISEEDLAANDILDYKDDDDKV

Tag:	C-Myc/DDK
Predicted MW:	29.8 kDa
Concentration:	>0.05 µg/µL as determined by microplate BCA method
Purity:	> 80% as determined by SDS-PAGE and Coomassie blue staining
Buffer:	25 mM Tris-HCl, 100 mM glycine, pH 7.3, 10% glycerol
Preparation:	Recombinant protein was captured through anti-DDK affinity column followed by conventional chromatography steps.
Note:	For testing in cell culture applications, please filter before use. Note that you may experience some loss of protein during the filtration process.
Storage:	Store at -80°C.
Stability:	Stable for 12 months from the date of receipt of the product under proper storage and handling conditions. Avoid repeated freeze-thaw cycles.
RefSeq:	NP_004920
Locus ID:	793
UniProt ID:	P05937

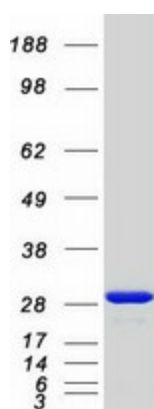


[View online »](#)

RefSeq Size:	2531
Cytogenetics:	8q21.3
RefSeq ORF:	783
Synonyms:	CALB; D-28K

Summary: The protein encoded by this gene is a member of the calcium-binding protein superfamily that includes calmodulin and troponin C. Originally described as a 27 kDa protein, it is now known to be a 28 kDa protein. It contains four active calcium-binding domains, and has two modified domains that are thought to have lost their calcium binding capability. This protein is thought to buffer entry of calcium upon stimulation of glutamate receptors. Depletion of this protein was noted in patients with Huntington disease. [provided by RefSeq, Jan 2015]

Product images:



Coomassie blue staining of purified CALB1 protein (Cat# [TP301358]). The protein was produced from HEK293T cells transfected with CALB1 cDNA clone (Cat# [RC201358]) using MegaTran 2.0 (Cat# [TT210002]).