

## Product datasheet for TP301353

### MRPS25 (NM\_022497) Human Recombinant Protein

#### Product data:

**Product Type:** Recombinant Proteins  
**Description:** Recombinant protein of human mitochondrial ribosomal protein S25 (MRPS25), nuclear gene encoding mitochondrial protein, 20 µg

**Species:** Human

**Expression Host:** HEK293T

**Expression cDNA Clone or AA Sequence:** >RC201353 protein sequence  
**Red**=Cloning site **Green**=Tags(s)

MPMKGRFPPIRRTLQYLSQGNVVKDQSVKVMVTVNYNTHGELGEGARKFVFFNIPQIQYKPNPWVQIMMFKNM  
 TPSPFLRFYLDQGEQVLVDVETKSNKEIMEHIRKILGKNEETLREEEEEKKQLSHPANFGPRKYCLRECI  
 CEVEGQVPCPSLVPLPKEMRGKYKAALKADAQD

**TR**TRPLEQKLISEEDLAANDILDYKDDDDKV

**Tag:** C-Myc/DDK

**Predicted MW:** 19.9 kDa

**Concentration:** >0.05 µg/µL as determined by microplate BCA method

**Purity:** > 80% as determined by SDS-PAGE and Coomassie blue staining

**Buffer:** 25 mM Tris-HCl, 100 mM glycine, pH 7.3, 10% glycerol

**Preparation:** Recombinant protein was captured through anti-DDK affinity column followed by conventional chromatography steps.

**Note:** For testing in cell culture applications, please filter before use. Note that you may experience some loss of protein during the filtration process.

**Storage:** Store at -80°C.

**Stability:** Stable for 12 months from the date of receipt of the product under proper storage and handling conditions. Avoid repeated freeze-thaw cycles.

**RefSeq:** [NP\\_071942](#)

**Locus ID:** 64432

**UniProt ID:** [P82663](#)



[View online »](#)

RefSeq Size: 4574

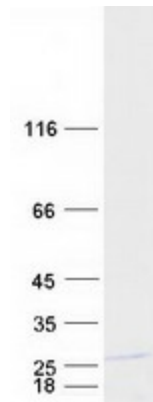
Cytogenetics: 3p25.1

RefSeq ORF: 519

Synonyms: COXPD50; MRP-S25; RPMS25

**Summary:** Mammalian mitochondrial ribosomal proteins are encoded by nuclear genes and help in protein synthesis within the mitochondrion. Mitochondrial ribosomes (mitoribosomes) consist of a small 28S subunit and a large 39S subunit. They have an estimated 75% protein to rRNA composition compared to prokaryotic ribosomes, where this ratio is reversed. Another difference between mammalian mitoribosomes and prokaryotic ribosomes is that the latter contain a 5S rRNA. Among different species, the proteins comprising the mitoribosome differ greatly in sequence, and sometimes in biochemical properties, which prevents easy recognition by sequence homology. This gene encodes a 28S subunit protein. A pseudogene corresponding to this gene is found on chromosome 4. Alternative splicing results in multiple transcript variants. [provided by RefSeq, Feb 2016]

### Product images:



Coomassie blue staining of purified MRPS25 protein (Cat# TP301353). The protein was produced from HEK293T cells transfected with MRPS25 cDNA clone (Cat# [RC201353]) using MegaTran 2.0 (Cat# [TT210002]).